



# DSD Business Systems

**Sage 100 Enhancements**

**A118**

**A/P Invoice Date as G/L Posting Date**

**AP-1118**

**Version 7.30**



Information in this document is subject to change without notice.

Copyright 1993-2024, DSD Business Systems All rights reserved.

A/P Invoice Date as G/L Posting Date User's Manual  
Version 7.30

10 July, 2024

DSD Business Systems  
8787 Complex Drive  
Suite 400  
San Diego, CA 92123  
858/550-5900 8:00am to 5:00pm PST  
858/550-4900 Fax

### Trademarks

**ProvideX**® is a Trademark of Sage Software.

**Windows** is a trademark of Microsoft Corporation.

**Sage 100**® is a registered trademark of Sage Software.

**PXPlus**® is a registered trademark of PVX Plus technologies

All other product names and brand names are service marks, and/or trademarks or registered trademarks of their respective companies.

This documentation and the software described herein, is prepared and published under license. Sage Software has not tested or verified either the software or any representation in this documentation regarding the software. Sage Software does not make any warranty with respect to either this documentation or the software described herein, and specifically disclaims any warranty, express or implied, with respect hereto, including the warranties of fitness for a particular purpose and merchantability.

## **Table of Contents**

---

<b>SECTION A: INTRODUCTION</b>	<b>4</b>
WEB RESOURCES .....	4
SUPPORT .....	4
A/P INVOICE DATE AS G/L POSTING DATE FEATURES .....	5
<b>SECTION B: GETTING STARTED</b>	<b>6</b>
REQUIRED LEVELS.....	6
INSTALLATION.....	6
DSD ENHANCEMENT CONTROL PANEL.....	8
<b>SECTION C: SETUP</b>	<b>10</b>
<b>SECTION D: SYSTEM OPERATIONS</b>	<b>12</b>
<b>SECTION E: UNINSTALL DSD ENHANCEMENTS</b>	<b>14</b>

## Section A: Introduction

---

This manual contains a description and instructions for this DSD product. Operating instructions are included for the features added by this product to Sage 100. For instructions on using Sage 100, refer to the appropriate Sage 100 manual, or call your Sage 100 reseller. DSD Business Systems offers excellent Sage 100 support, at an hourly rate.

### Web Resources

DSD web site: <http://www.dsdinc.com>

The Enhancement page contains:

- Current Release Schedule*
- Purchasing Information*
- Installation Instructions*
- Product Support*
- Enhancement Links*

A118 A/P Invoice Date as G/L Posting Date:

<http://www.dsdinc.com/enhancement/ap-invoice-date-as-gl-posting-date/>

The product web page contains:

- Product Description*
- Web Links*
- Current Product Version Table*
- Product Installation File Download*
- Product Manual in .pdf Format*
- Revision History*
- FAQ*

### Support

DSD provides product support through Sage 100 resellers. Support is provided for the current version. Older versions are supported at an hourly rate. DSD's telephone number is **858-550-5900**. Fax: **858-550-4900**.

For a hard error, where the program displays an error dialog, report:

- Error number.*
- Program name.*
- Line number.*
- Program version.*
- Exact sequence that caused the error, including menus and menu selections.*

*Other pertinent information.*

If leaving a message or faxing, please include:

*Your name.*

*Your phone number (and fax if applicable) and extension.*

It is possible to be unable to duplicate a problem, because of data corruption or because we have not exactly duplicated a particular operating environment. In such circumstances, we can only continue to try to fix the problem if we can either access the system with Symantec PCAnywhere or by some other means access or duplicate the system.

### ***A/P Invoice Date as G/L Posting Date Features***

This DSD Extended Solution posts G/L Daily Postings from the A/P Invoice Register Update using the A/P Invoice Date. During the A/P Invoice Register Update, the A/P Invoice Date is used for the G/L Daily Posting file Posting Date rather than the Accounts Payable Posting Date. There will be one balanced G/L Posting for each unique Invoice Date in the file.

This enhancement can be used with the A/P Option for G/L Postings 'Invoice Register in Detail' checked or unchecked.

## Section B: Getting Started

### CAUTION

- **If you reinstall or upgrade one of the Sage 100 modules listed in the following table, you must also reinstall this Enhancement.**
- Enhancements from different Sage Developers are generally not designed to work together. If installed together, problems are likely to occur.
- **Check with DSD before installing more than one Enhancement.**

### Required Levels

Sage 100 Module	Module Required	Required Level
A/P	Y	7.30

### Installation

1. **Back-up:** Exit all Sage 100 sessions. Back-up existing Sage 100 data.
2. **Check Levels:** Sage 100 module levels **must match** those listed above.
3. **Run Enhancement Setup Program:** Save the executable installation program (sent to you or downloaded from our website) in a convenient location on the Sage 100 server. Launch the program from Windows Explorer or by selecting Start/Run, and then browse for the file in the location you saved it. Follow on-screen instructions.
4. **Send your Sage Serial Number to your DSD Representative:** Send your Sage Serial Number to your DSD representative in order for us to send you back the encrypted keys to unlock your system. This serial number can be found in Library Master\Setup\System Configuration, Tab 3. Registration as Serial Number.
5. **Re-Start Sage 100:** Sage 100 will be updated.
6. **Unlock the Enhancement:** DSD Enhancements must be unlocked to run. When any part of the Enhancement is run for the first time, the **DSD Enhancement License Agreement and Activation** window will appear. Follow the steps shown on that window. *You can click the Help button for more detailed instructions.*

**Note:** On the next page is a screenshot of the DSD Enhancement License Agreement and Activation window.

After accepting the License Agreement, you can then select the type of unlocking that you'd prefer. The choices are File, Web, Demo and Manual Entry.

**File Unlock:** After receiving your encrypted serial number key file from DSD, and placing that file in the MAS90/SOA directory, selecting this option will unlock all products keys contained in the file. This means you can unlock all enhancements at once using this option.

**Web Unlock:** If the system that is running the DSD Enhancement *has web access* and you *have sent DSD your Sage Serial number*, you can unlock the Enhancement without assistance using Web

Unlock. When this option is selected, the program will attempt to download encrypted serial number key file from DSD and then proceed to unlock all enhancements contained in the file.

- The Sage 100 system that is being used must have web access for this option to be effective.
- You can send your Sage Serial Number to your DSD Enhancements sales representative.

**Demo Unlock:** If a Demo mode is available for the Enhancement you're running, you will be able to Demo unlock the product without assistance from DSD for demo purposes.

- Creating a Demo Unlock is a good way to temporarily unlock DSD Enhancements off-hours, if you do not have web or email access. Later, you can unlock the product fully, during business hours.

**Manual Entry Unlock:** If you want to unlock a single enhancement using a single encrypted key, you can select this option and enter the 64 character key you receive from DSD by copy and paste.

**Note:** You can also unlock a DSD Enhancement through the **DSD Enhancement Control Panel** found on the Library Master Utilities Menu. Then, select the Enhancement with your mouse from the list of Enhancements and click the **Unlock Product** button on the right side of the window.

- Convert Data:** After unlocking, the DSD Conversion Wizard will appear. Follow on-screen instructions to complete data conversion. You can exit the conversion program without converting data. The Enhancement will not proceed, however, until data is converted. If you enter an enhanced program and data has not been converted, the conversion program will run again.

### DSD Enhancement Control Panel

Starting with version 3.61, all DSD Enhancement products include DSD's Enhancement Control Panel. The **DSD Enhancement Control Panel is accessed from the Library Master Utilities menu.**

The DSD Enhancement Control Panel is a simple to use yet powerful system to help maintain DSD Enhancements installed on a Sage 100 system. To use it, select an Enhancement product from the list on the window and then click the button, on the right side of the window, which corresponds with the desired task.

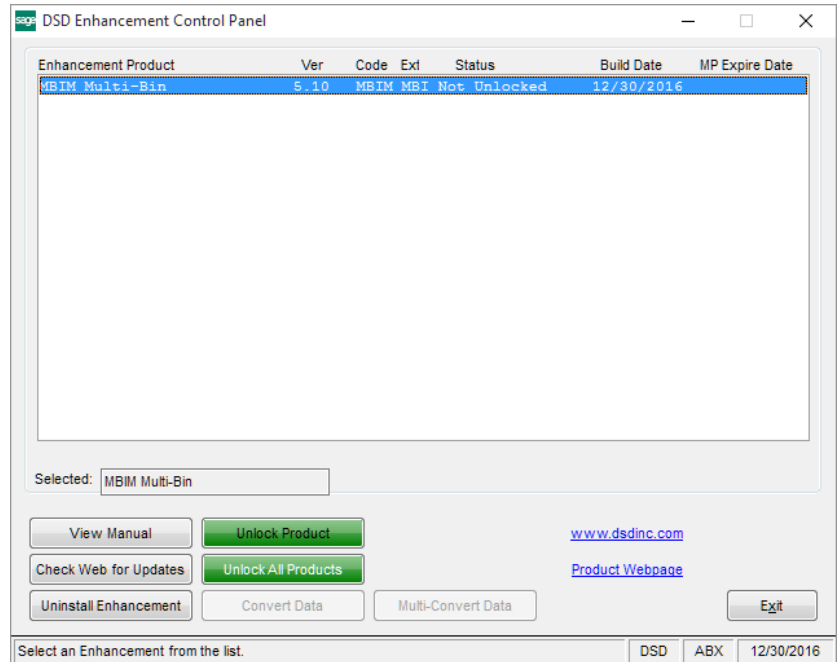
**View Manual:** This button will display the product manual for the selected Enhancement using Adobe Acrobat. For this to be possible, the PDF file for the corresponding manual must be in the "MAS90/PDF" folder in the Sage 100 system. If the file is not present, and the system has web access, the correct PDF file will be automatically downloaded from the DSD website, put into the "MAS90/PDF" folder and then displayed.

**Check the Web for Updates:** This button will check the DSD website to see what the current build is the selected Enhancement and alert the user if a later version is available. *This requires an internet connection on the Sage 100 system.*

**Unlock Product:** This will cause the DSD Enhancement License Agreement and Activation window to appear. Using this window is described on the previous page. *This button is disabled if the selected Enhancement is already unlocked or if unlocking is not required.*

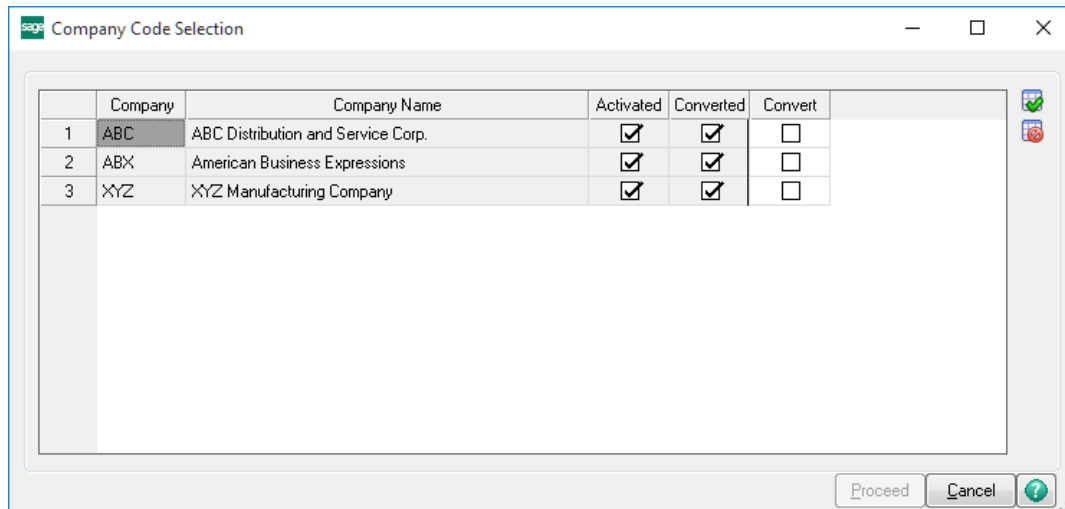
**Unlock All Products:** This will cause the DSD Enhancement All License Agreement and Activation window to appear. This window is similar to the one described on the previous page, but has only web and file as options to unlock. *This button is never disabled.*

**Convert Data:** After verification, the selected Enhancement's data conversion program will run. Data conversion is non-destructive, and may be triggered any number of times. Sometimes this is required to fix data records imported or updated from a non-enhancement installation.





**Multi-Convert Data:** Multiple Companies can be converted at the same time for a given Enhancement. (If you have a large number of Companies to convert, please do in batches of 20 or fewer due to memory limitations.)



**Help:** The Help button, located at the bottom right of the window, opens an HTML help file.

**Get Adobe Acrobat:** Opens the Adobe Acrobat website to the page where Acrobat can be downloaded and installed.

**Uninstall Enhancement** If this option is available, then selecting this button will start the un-install process, removing the enhancement from the system. (for more information see [Uninstall DSD Enhancements](#))

## Section C: Setup

Upon completion of software installation, you will need to access the DSD Extended Solutions Setup from the Accounts Payable Setup menu. Select this part number and the Setup screen for this Extended Solution will appear. Check the 'Enable DSD Extended Solution' box to activate this Extended Solution.

The screenshot shows a software dialog box titled "AP-1118 Setup Options". Inside the dialog, the main heading is "AP-1118 AP Inv Date as GL Post". There are three main settings:

- Enable DSD Extended Solution:** This checkbox is checked. To its right, the text "Level 7.30" is displayed.
- Use Invoice Date for G/L Postings (Invoice Register):** This checkbox is checked.
- Use Check Date for G/L Postings (Manual Check and Payment Register):** This checkbox is unchecked.

At the bottom right of the dialog, there are two buttons: "Accept" and "Cancel". Below the dialog, a status bar shows the text "DSD ABC 6/28/2024".

Answer the following prompts:

**Use Invoice Date for G/L Postings (Invoice Register):** Enable this checkbox option to use the Invoice Date as the G/L Posting date when the Invoice is updated by the Invoice Register.

**Use Check Date for G/L Postings (Manual Check and Payment Register):** Enable this checkbox option to use the Check Date as the G/L Posting date when the Check is updated by the Manual Check and Payment Register.

This Extended Solution may be used regardless of the setting for the A/P Option for G/L Postings 'Invoice Register in Detail'

You should visit this Setup screen after each upgrade or reinstallation of this Extended Solution.

### Role Maintenance

The following Task has been added to Accounts Payable, Setup Options:

- Extended Solutions Setup

Please review your security setup in Role Maintenance and make appropriate changes.

## Section D: System Operations

If the setup option is selected, the A/P Invoice Register update has been modified to use the A/P Invoice Date for the Daily Transaction Register Posting Date rather than the Accounts Payable Posting Date. There will be one balanced G/L Posting for each unique Invoice Date in the file. The same Source Journal will be used in each posting.

Accounts Payable Invoice Register  
 Journal Posting Date: 7/1/2025  
 Register Number: AP-000017  
 Batch Number: 00001

ABC Distribution and Service Corp. (ABC)

Division Number: 01 TRADE ACCOUNTS PAYABLE								
Vendor No \ Invoice No	Dates			Batch Number	Invoice Amount	Discount Amount	Distribution Amount	
	Invoice	Due	Discount					
AIRWAY 123456	Airway Property					Separate Check: No		
	7/1/2025	7/30/2025		00001	250.00	0.00		250.00
	G/L Account: 555-00-03				Rent			
AIRWAY 23456	Airway Property					Separate Check: No		
	7/20/2025	7/30/2025		00001	400.00	0.00		400.00
	G/L Account: 555-00-03				Rent			
STEV 34567	Stevens Supply					Separate Check: No		
	7/20/2025	8/19/2025	7/30/2025	00001	700.00	14.00		700.00
	G/L Account: 450-02-02				Freight - West			
STEV 45678	Stevens Supply					Separate Check: No		
	6/30/2025	7/30/2025	7/10/2025	00001	900.00	18.00		900.00
	G/L Account: 450-02-02				Freight - West			
<b>Division 01 Total:</b>					<u>2,250.00</u>	<u>32.00</u>		<u>2,250.00</u>
<b>Report Total:</b>					<u>2,250.00</u>	<u>32.00</u>		<u>2,250.00</u>
						<b>Prepaid Amt:</b>	<u>.00</u>	
						<b>Prepaid Amt:</b>	<u>0.00</u>	

Daily Transaction Register

ABC Distribution and Service Corp. (ABC)

Postings For: 6/30/2025				
Source Journal	Account Number	Account Description/Posting Comment	Debit	Credit
AP-000017	200-01-00	Accounts payable - trade A/P INVOICE ENTRY /DM: 01		900.00
	450-02-02	Freight - West Stevens Supply /IN: 45678	900.00	
<b>Journal 000017 Totals:</b>			<u>900.00</u>	<u>900.00</u>
<b>Source AP Totals:</b>			<u>900.00</u>	<u>900.00</u>
<b>6/30/2025 Totals:</b>			<u>900.00</u>	<u>900.00</u>
Postings For: 7/1/2025				
Source Journal	Account Number	Account Description/Posting Comment	Debit	Credit
AP-000017	200-01-00	Accounts payable - trade A/P INVOICE ENTRY /DM: 01		250.00
	555-00-03	Rent Airway Property /IN: 123456	250.00	
<b>Journal 000017 Totals:</b>			<u>250.00</u>	<u>250.00</u>
<b>Source AP Totals:</b>			<u>250.00</u>	<u>250.00</u>
<b>7/1/2025 Totals:</b>			<u>250.00</u>	<u>250.00</u>
Postings For: 7/20/2025				
Source Journal	Account Number	Account Description/Posting Comment	Debit	Credit
AP-000017	200-01-00	Accounts payable - trade A/P INVOICE ENTRY /DM: 01		1,100.00
	450-02-02	Freight - West Stevens Supply /IN: 34567	700.00	
	555-00-03	Rent Airway Property /IN: 23456	400.00	
<b>Journal 000017 Totals:</b>			<u>1,100.00</u>	<u>1,100.00</u>
<b>Source AP Totals:</b>			<u>1,100.00</u>	<u>1,100.00</u>
<b>7/20/2025 Totals:</b>			<u>1,100.00</u>	<u>1,100.00</u>
<b>Report Totals:</b>			<u>2,250.00</u>	<u>2,250.00</u>

If the setup option is selected, the A/P Manual Check and Payment Register update has been modified to use the Check Date for the Daily Transaction Register Posting Date rather than the Accounts Payable Posting Date. There will be one balanced G/L Posting for each unique Check Date in the file. The same Source Journal will be used in each posting.

If an Invoice or Manual Check date falls into a prior General Ledger period, an error will print on the error log. The update will not occur until the error is corrected.

Accounts Payable Invoice Register Error Log  
Register Number: AP-000017  
Batch Number: 00001

ABC Distribution and Service Corp. (ABC)

---

Error Description

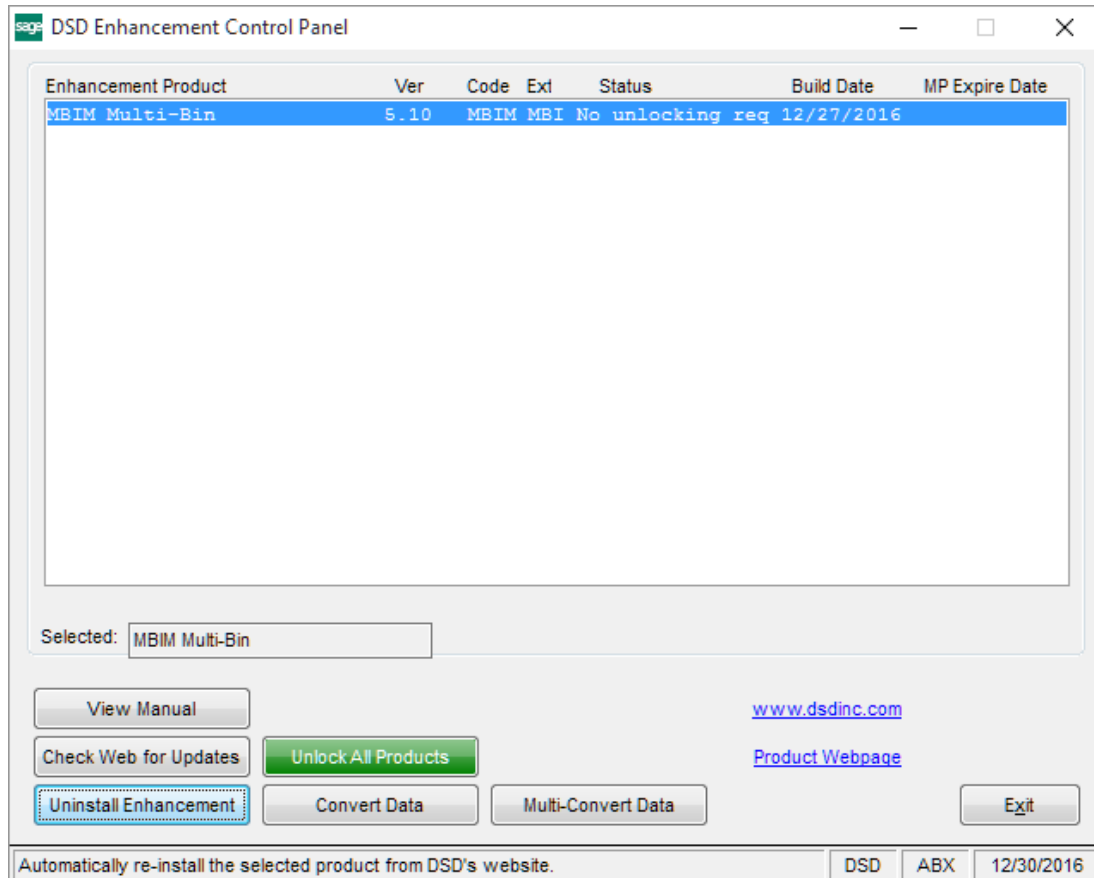
---

45678 Invoice Date falls into prior GL Period

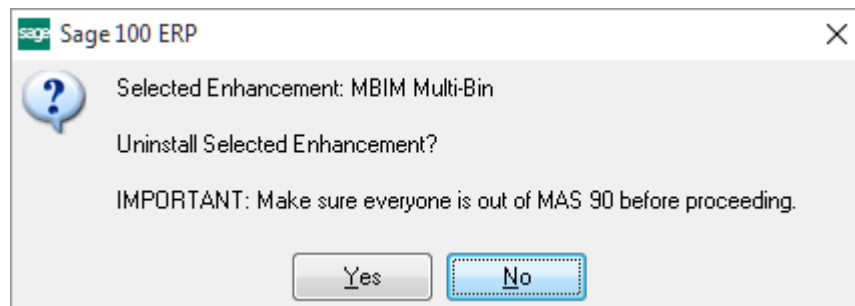
This Extended Solution does not change the Journal Posting Date which prints on the register heading.

## Section E: Uninstall DSD Enhancements

A DSD Enhancements Uninstall Utility has been provided for the purposes of removing DSD Enhancements from your Sage 100 System. This utility may be accessed from the **DSD Enhancement Control Panel** menu option on the **Library Master / Utilities** menu.

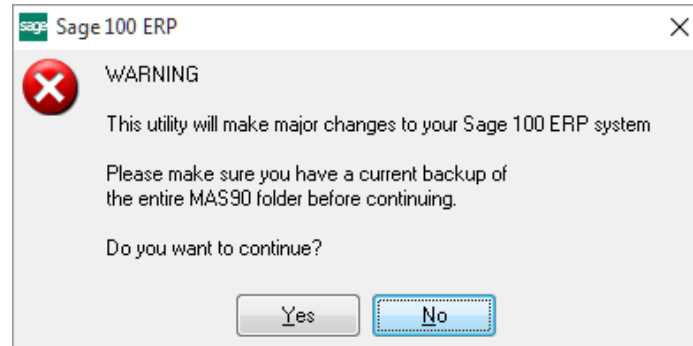


When accessing the **DSD Enhancement Control**, select the enhancement that you wish to Uninstall, and then select the **Uninstall Enhancement** button. The following message box will appear:



Select **No** to exit the Uninstall Process.  
 Select **Yes** to continue with the Uninstall Process.

The following message box will appear, to remind you that a complete backup of your entire Sage 100 system should be completed prior to uninstalling a DSD product.



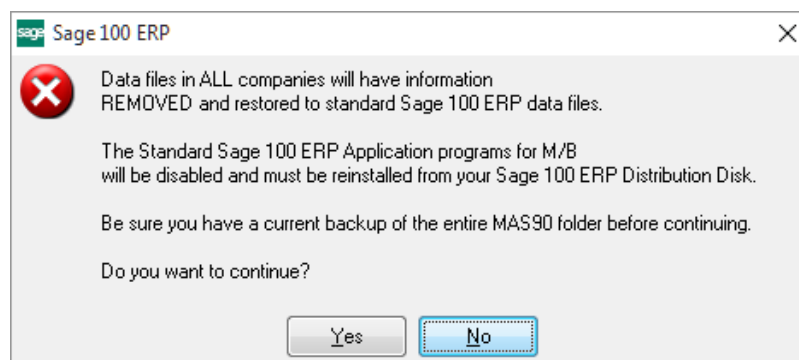
Select **No** to exit the Uninstall Process.  
Select **Yes** to continue with the Uninstall Process.

**After the Uninstall of the DSD Enhancement, you MUST reinstall certain standard Sage 100 modules, followed by reinstallation of Product Updates and Hot Fixes, if applicable.**

A message box will appear, and will display which of those specific Sage 100 modules you must reinstall afterwards.

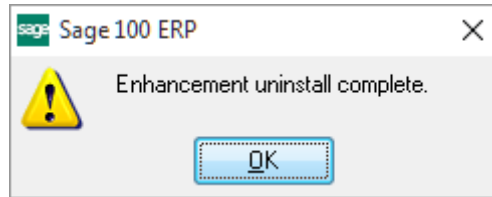
Select **No** to exit the Uninstall Process.  
Select **Yes** to continue with the Uninstall Process.

The following message box will appear, displaying the final warning message.



Select **No** to exit the Uninstall Process.  
Select **Yes** to continue with the Uninstall Process. At this point, the DSD Enhancement will be removed from the Sage 100 system.

After completion of the Uninstall, the following message box will appear. Select OK to continue.



Now that the Uninstall process is completed, you must:

- Reinstall the applicable standard Sage 100 modules
- Reinstall the latest Sage 100 Service Pack/Updates, if applicable.
- Reinstall any other DSD Enhancements or Developer products that are affected from the reinstallation of the standard Sage 100 module(s).