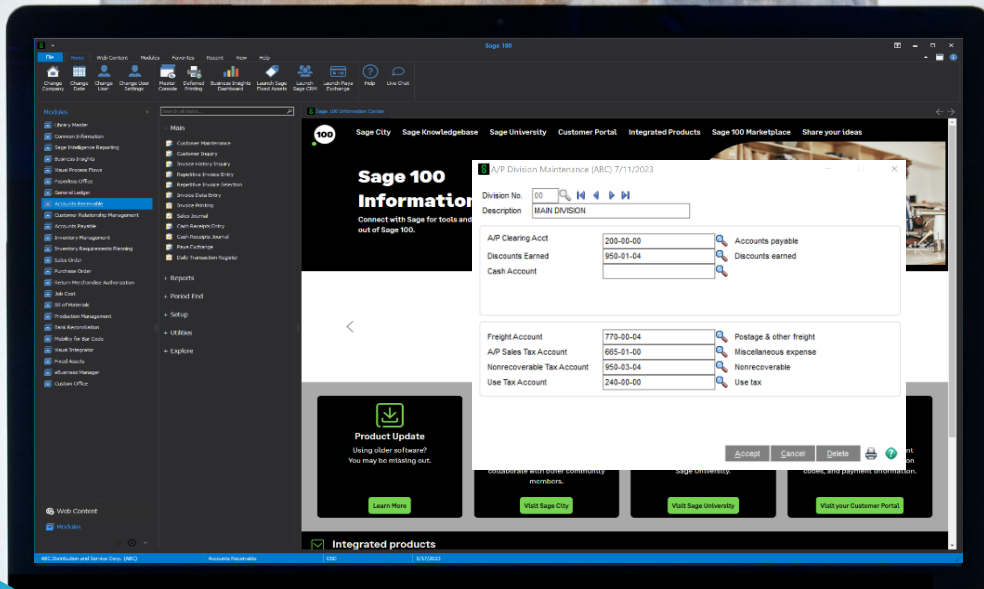


Sage



DSD BUSINESS SYSTEMS

SAGE 100 ENHANCEMENTS

IMLC

INVENTORY TRANSACTION ENTRY LANDED COST

Information in this document is subject to change without notice.
© Copyright 1993-2024, DSD Business Systems All rights reserved.

Inventory Transaction Entry Landed Cost

Published Date: December 26, 2024

DSD Business Systems
8787 Complex Drive
Suite 400
San Diego, CA 92123
858-550-5900 8:00am to 5:00pm PST
858-550-4900 Fax

Trademarks

ProvideX® is a registered trademark of Sage Software.

Windows is a trademark of Microsoft Corporation.

Sage 100® is a registered trademark of Sage Software.

All other product names and brand names are service marks, and/or trademarks or registered trademarks of their respective companies.

This documentation and the software described herein, is prepared and published under license. Sage Software has not tested or verified either the software or any representation in this documentation regarding the software. Sage Software does not make any warranty with respect to either this documentation or the software described herein, and specifically disclaims any warranty, express or implied, with respect hereto, including the warranties of fitness for a particular purpose and merchantability.

TABLE OF CONTENTS

Section A: Introduction	4
Inventory Transaction Entry Landed Cost Features	4
Section B: Getting Started.....	5
Updated Modules	5
Installation	6
DSD Enhancement Control Panel	6
Section C: Setup	10
Setup Options.....	10
Section D: System Operations	11
Using Inventory Transaction Entry Landed Cost	11
Transaction Entry	11
Transaction Register	13
Daily Transaction Register	14
Section E: Uninstall DSD Enhancements.....	15
Section G: Resources and Support.....	17
Web Resources.....	17
Support.....	17

Section A: Introduction

This manual contains a description and instructions for this DSD product. Operating instructions are included for the features added by this product to Sage 100. For instructions on using Sage 100, refer to the appropriate Sage 100 manual, or call your Sage 100 reseller. DSD Business Systems offers excellent Sage 100 support, at an hourly rate.

Inventory Transaction Entry Landed Cost

Features

- Enter Inventory Transaction Transfers and Receipt entries with Landed Costs.
- Each Transaction Entry line can be selectively marked for Landed Cost Allocation.
- During Transaction Register Printing, the Landed Cost Amounts, Allocations, and Item New Unit Costs (with Landed Cost Allocation applied) print on the Transaction Register.
- New Unit Costs that print on the Transaction Register are posted as such during the Transaction Register update. The New Unit Cost (shown as Item Cost) and Allocated Cost can be seen respectively on the Cost Detail tab in Inventory Management / Inquiry.
- Landed Cost Allocation amounts can be posted in detail in the resulting Daily Transaction Register.

Section B: Getting Started

Important – Read this section prior to installing this enhancement.



Updated Modules

This enhancement modifies two Sage 100 modules. If you reinstall one of the Sage 100 modules listed in the following table, you must also reinstall this enhancement. **Enhancements from different Sage Tech Partners may not be designed to work together.**

Module	IMLC
Common Information	✓
Inventory Management	✓

If you are upgrading Sage 100 with a Product Update, check the DSD website for compatibility before upgrading. A new version of the enhancement may be required.

If you are upgrading Sage 100 to a new version (e.g., 2021 to 2023), you must obtain the latest compatible release from the DSD website prior to installing and converting.

Ensure the compatibility of all enhancements with the version being upgraded to prior to starting the installation process. Work with your reseller to ensure that enhancements are compatible with each other and note the proper order in which they should be installed.

Installation

Back-up: Exit all Sage 100 sessions. Back-up existing Sage 100 data.

Check Levels: Sage 100 module levels must match those listed above.

Run Enhancement Setup Program: Save the executable installation program (sent to you or downloaded from our website) in a convenient location on the Sage 100 server. Launch the program from Windows Explorer or by selecting Start/Run, and then browse for the file in the location you saved it. Follow on-screen instructions.

Send your Sage Serial Number to your DSD Representative: Send your Sage Serial Number to your DSD representative in order for us to send you back the encrypted keys to unlock your system. This serial number can be found in Library Master\Setup\System Configuration, Tab 3. Registration as Serial Number.

Re-Start Sage 100: Sage 100 will be updated.

Update Security: After installation, you may not see the modules you installed on the Launcher menu. You will need to update all your security Roles to include access to the newly installed modules. Make sure your user has sufficient rights to modify Role Maintenance and add access to the new DSD enhancements to the appropriate Roles.



If this is your first DSD enhancement, make sure to add the DSD Enhancement Control Panel in the Library Master module to an appropriate Role.

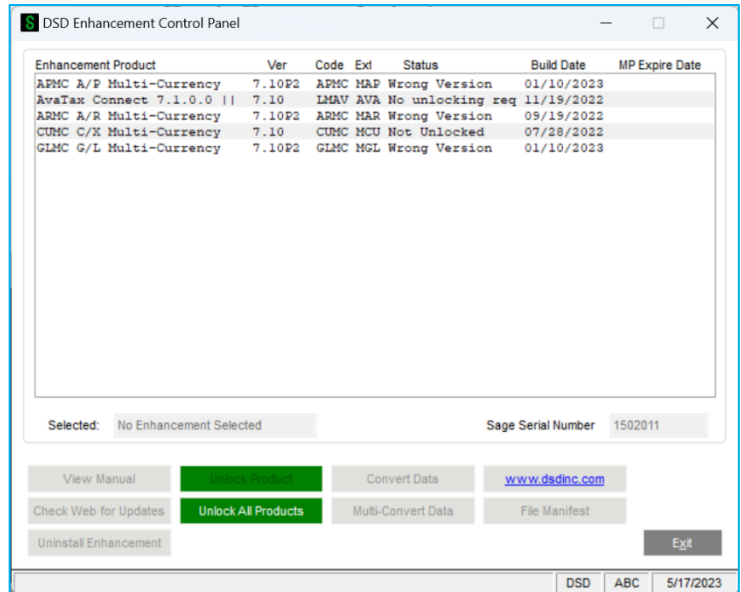
Run the DSD Enhancement Control Panel: Run the DSD Enhancement Control Panel from the Library Master module under the Utilities menu.

DSD Enhancement Control Panel

Starting with version 3.61, all DSD Enhancement products include DSD's Enhancement Control Panel. The DSD Enhancement Control Panel is accessed from the Library Master Utilities menu.

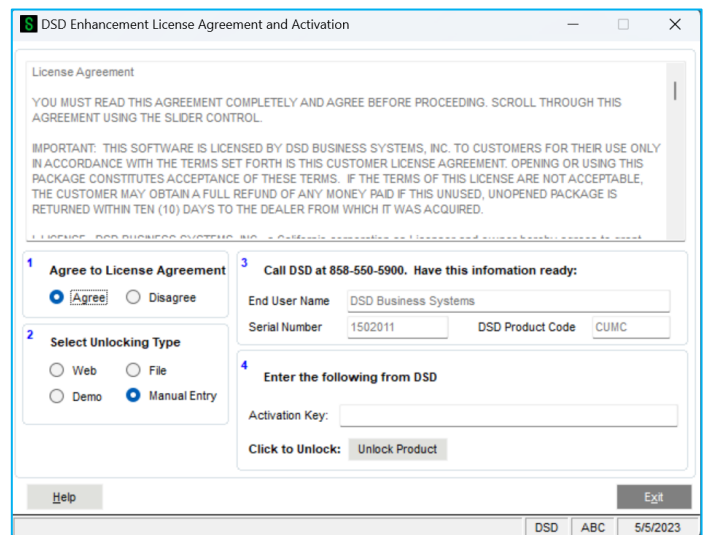
The DSD Enhancement Control Panel is a simple to use yet powerful system to help maintain DSD Enhancements installed on a Sage 100 system. To use it, select an Enhancement product from the list on the window and then click the button, on the right side of the window, which corresponds with the desired task.

View Manual: This button will display the product manual for the selected Enhancement using Adobe Acrobat. For this to be possible, the PDF file for the corresponding manual must be in the “MAS90/PDF” folder in the Sage 100 system. If the file is not present, and the system has web access, the correct PDF file will be automatically downloaded from the DSD website, put into the “MAS90/PDF” folder and then displayed.



Check the Web for Updates: This button will check the DSD website to see what the current build is the selected Enhancement and alert the user if a later version is available. *This requires an internet connection on the Sage 100 system.*

Unlock Product: This will cause the DSD Enhancement License Agreement and Activation window to appear. DSD Enhancements must be unlocked to run. When any part of the Enhancement is run for the first time, the DSD Enhancement License Agreement and Activation window will appear. Follow the steps shown on that window. You can click the Help button for more detailed instructions. *This button is disabled if the selected Enhancement is already unlocked or if unlocking is not required.*




Agree to the License Agreement: On the DSD Enhancement License Agreement and Activation window, click on the Agree button to accept the DSD License Agreement. After accepting the License Agreement, you can then select the type of unlocking that you’d prefer. The choices are File, Web, Demo and Manual Entry.

File Unlock: After receiving your encrypted serial number key file from DSD, and placing that file in the MAS90/SOA directory, selecting this option will unlock all products keys contained in the file. This means you can unlock all enhancements at once using this option.

Web Unlock: If the system that is running the DSD Enhancement **has web access** and you **have sent DSD your Sage Serial number**, you can unlock the Enhancement without assistance using

Web Unlock. When this option is selected, the licensing program will attempt to download encrypted serial number key file from DSD **and then proceed to unlock all enhancements contained in the file.**

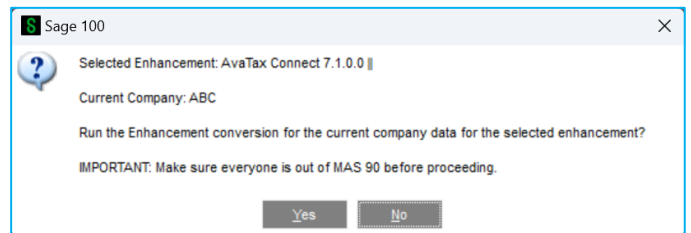
Demo Unlock: If a Demo mode is available for the Enhancement you're running, you will be able to Demo unlock the product without assistance from DSD for demo purposes.

 Creating a Demo Unlock is a good way to temporarily unlock DSD Enhancements off-hours, if you do not have web or email access. Later, you can unlock the product fully, during business hours.

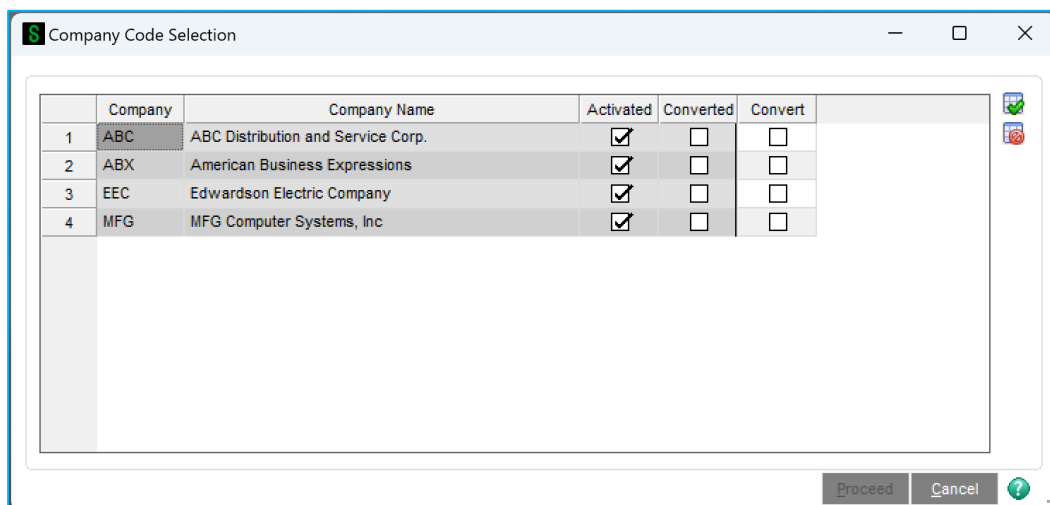
Manual Entry Unlock: If you want to unlock a single enhancement using a single encrypted key, you can select this option and enter the 64 character key you receive from DSD by copy and paste.

Unlock All Products: This will cause the DSD Enhancement All License Agreement and Activation window to appear. This window is similar to the one described on the previous page but has only web and file as options to unlock. *This button is never disabled.*

Convert Data: After verification, the selected Enhancement's data conversion program will run. Data conversion is non-destructive and may be triggered any number of times. Sometimes this is required to fix data records imported or updated from a non-enhancement installation.



Multi-Convert Data: Multiple Companies can be converted at the same time for a given Enhancement. *(If you have a large number of Companies to convert, please do in batches of 20 or fewer due to memory limitations.)*



Help: The Help button, located at the bottom right of the window, opens an HTML help file.

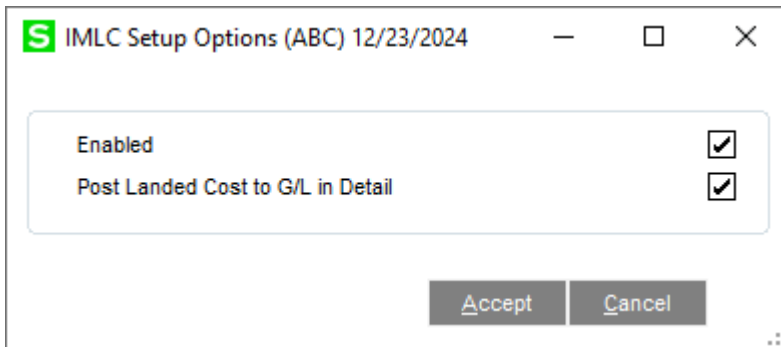
Get Adobe Acrobat: Opens the Adobe Acrobat website to the page where Acrobat can be downloaded and installed.

Uninstall Enhancement: If this option is available, then selecting this button will start the un-install process, removing the enhancement from the system. For more information see [Uninstall DSD Enhancements](#).

Section C: Setup

Setup Options

The **Inventory Transaction Entry Landed Cost** menu item has been added to the I/M Setup Menu.



Enabled Check this box to enable this enhancement.

Post Landed Cost to G/L in Detail By default, Landed Cost Allocation amounts post in summary in the Daily Transaction Register following an Inventory Transaction Register Posting. Check this box to post these values in detail. This option is only available if **Enabled** is checked.

Section D: System Operations

Using Inventory Transaction Entry Landed Cost

Transaction Entry

When Transaction Type Transfers or Receipts is selected, followed by selection of an Entry Number, the Landed Cost button will enable.

S Transaction Entry (ABC) 12/23/2024

Transaction Type: Receipts

Entry Number: 00000115

1. Header 2. Lines

Transaction Date: 3/27/2023 Landed Cost...

Default Warehouse: 000 CENTRAL WAREHOUSE

Comment: [Empty Field]

Accept Cancel Delete [Printer Icon] [Help Icon]

Select the Landed Cost button to open the Landed Cost Entry panel. Enter Landed Cost Types along with respective Landed Cost Amounts (Landed Cost Amt). Select the OK button when finished or the Cancel button to cancel changes.

	Cost Type	Description	Method	Landed Cost Amt
1	QUANT	LC QUANTITY	Quantity	8.88
2	VOLUM	LC VOLUME	Volume	14.16
3	V_1	Volume 1	Volume	21.18
4				.00

Total Landed Cost: 44.22

On the Lines tab, proceed to enter items as normal. A new Allocated Landed Cost checkbox column will appear in the main grid. Check this box for each line for which Landed Cost is to be allocated.

	Item Code	Quantity	Unit Cost	Extension	Allocate Landed Cost
1	2480-8-50	3.00	1,581.000	4,743.00	<input checked="" type="checkbox"/>
2	1001-HON-H252	3.00	9,999.999	30,000.00	<input checked="" type="checkbox"/>
3		.00	.000	0.00	<input type="checkbox"/>

Total Amount: 34,743.00

Transaction Register

When a Transaction Register is printed, it will include some new content:

1. The Allocated Cost for each Landed Cost for each item selected for Allocate Landed Cost
2. New Unit Cost(s) for each item selected for Allocate Landed Cost.
3. The full Landed Cost amounts for each Landed Cost for each transaction

Inventory Transaction Register
 Journal Posting Date: 5/5/2025
 Receipts Register Number: IR-000032

ABC Distribution and Service Corp. (ABC)

Reference	Transaction Comment	Date	Unit of Measure	Whse	Quantity	Unit Cost	Extension Amount
00000115	2480-8-50 DESK FILE 8" CAP 50	3/27/2023	CASE	000			
	Lot: 101				2.00	1,581.000	3,162.00
	Lot: 10210				1.00	1,581.000	1,581.00
					Allocated QUANT :	8.79	
					Allocated VOLUM :	13.88	
					Allocated V_1 :	20.76	
					New Unit Cost:	1,595.477	
1001-HON-H252	HON 2 DRAWER LETTER FLE W/O LK		EACH	000			
					3.00	9,999.999	30,000.00
					Allocated QUANT :	0.09	
					Allocated VOLUM :	0.28	
					Allocated V_1 :	0.42	
					New Unit Cost:	10,000.263	
					Landed Cost QUANT:	8.88	
					Landed Cost VOLUM:	14.16	
					Landed Cost V_1:	21.18	
					Transaction Total:		34,743.00

Daily Transaction Register

If the *Post Landed Cost to G/L in Detail* in **IMLC Setup Options** is checked, the Allocated Landed Cost amounts will print and post in detail in and from the Daily Transaction Register.

Daily Transaction Register

ABC Distribution and Service Corp. (ABC)

Postings For: 5/5/2025

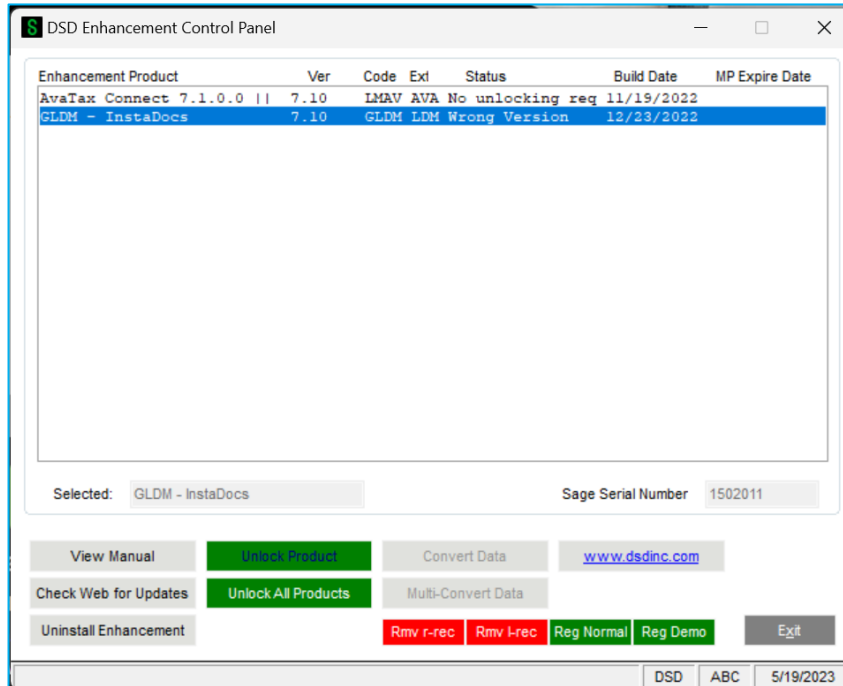
Source Journal	Account Number	Account Description/Posting Comment	Debit	Credit
IR-000032	115-00-03	Inventory - Central Warehouse	9,944.78	
		Inventory Transaction (RECEIPT)		
	170-01-00	Accum. depr. - warehse equip	30,000.79	
		Inventory Transaction (RECEIPT)		
	200-03-00	Purchases clearing account		39,896.35
		Inventory Transaction (RECEIPT)		
	770-00-03	Postage & other frei-CENTR		8.79
		QUANT LC QUANTITY 00000115		
	770-00-03	Postage & other frei-CENTR		13.88
		VOLUM LC VOLUME 00000115		
	770-00-03	Postage & other frei-CENTR		20.76
		V_1 Volume 1 00000115		
	770-00-03	Postage & other frei-CENTR		0.09
		QUANT LC QUANTITY 00000115		
	770-00-03	Postage & other frei-CENTR		0.28
		VOLUM LC VOLUME 00000115		
	770-00-03	Postage & other frei-CENTR		0.42
		V_1 Volume 1 00000115		
	770-00-03	Postage & other frei-CENTR		5.00
		WEIGH LC WEIGHT 00000118		
Journal 000032 Totals:			39,945.57	39,945.57
Source IR Totals:			39,945.57	39,945.57



NOTE: The IMLC Inventory Transaction Landed Cost enhancement will recognize and utilize Sage's Account Segment Substitution feature via standard rules.

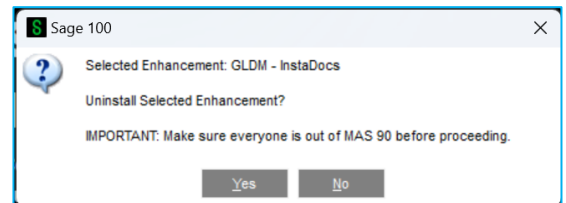
Section E: Uninstall DSD Enhancements

A DSD Enhancements Uninstall Utility has been provided for the purposes of removing DSD Enhancements from your Sage 100 System. This utility may be accessed from the **DSD Enhancement Control Panel** menu option on the **Library Master / Utilities** menu.



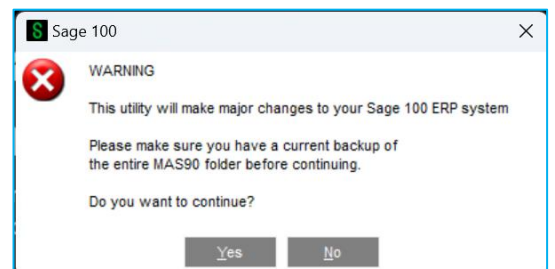
When accessing the **DSD Enhancement Control**, select the enhancement that you wish to Uninstall, and then select the **Uninstall Enhancement** button. The following message box will appear:

- Select **No** to exit the Uninstall Process.
- Select **Yes** to continue with the Uninstall Process.



The following message box will appear, to remind you that a complete backup of your entire Sage 100 system should be completed prior to uninstalling a DSD product.

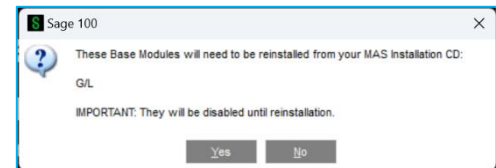
- Select **No** to exit the Uninstall Process.
- Select **Yes** to continue with the Uninstall Process.



After the Uninstall of the DSD Enhancement, you MUST reinstall certain standard Sage 100 modules, followed by reinstallation of Product Updates and Hot Fixes, if applicable.

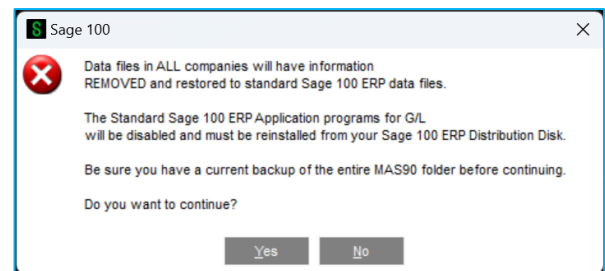
A message box will appear, and will display which of those specific Sage 100 modules you must reinstall afterwards.

- Select **No** to exit the Uninstall Process.
- Select **Yes** to continue with the Uninstall Process.

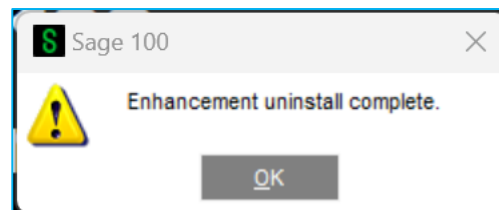


The following message box will appear, displaying the final warning message.

- Select **No** to exit the Uninstall Process.
- Select **Yes** to continue with the Uninstall Process. At this point, the DSD Enhancement will be removed from the Sage 100 system.



After completion of the Uninstall, the following message box will appear. Select OK to continue.



Now that the Uninstall process is completed, you must:

- Reinstall the applicable standard Sage 100 modules
- Reinstall the latest Sage 100 Service Pack/Updates, if applicable.
- Reinstall any other DSD Enhancements or Developer products that are affected from the reinstallation of the standard Sage 100 module(s).

Section G: Resources and Support

Web Resources

DSD web site: <http://www.dsdinc.com>

The Enhancement page contains:

- Current Release Schedule
- Purchasing Information
- Installation Instructions
- Product Support
- Enhancement Links

Accounts Payable Cash Basis:

<https://www.dsdinc.com/enhancements/marketplace/products/apcb-ap-cash-basis>

The product web page contains:

- Product Description
- Web Links
- Current Product Version Table
- Product Installation File Download
- Product Manual in .pdf Format

Support

DSD provides product support through Sage 100 resellers. Support is provided for the current version. Older versions are supported at an hourly rate.

- Telephone: 858-550-5900
- Fax: 858-550-4900
- Email: enhancements@dsdinc.com

For a hard error, where the program displays an error dialog, report:

- Enhancement Name
- Error number
- Program name
- Line number
- Program version

- Exact sequence that caused the error, including menus and menu selections
- Other pertinent information

If leaving a message, faxing or email, please include:

- Your name and company
- Your phone number (and fax if applicable) and extension.

It is possible to be unable to duplicate a problem, because of data corruption or because we have not exactly duplicated a particular operating environment. In such circumstances, we can only continue to try to fix the problem if we can either access the system remotely or by some other to duplicate the system.




Since 1984, DSD Business Systems has been providing clients with professional business consulting services and business software solutions across the globe. Specialties include Sage Intacct, Acumatica Cloud ERP, Sage 100, Sage 300, Sage 500, Sage CRM, Sage HRMS and more.

DSD Business Systems has been a Sage Tech Partner, commonly referred to as a “Master Developer”, for over 30 years. DSD currently has over 500 Enhancements to Sage 100 and has created thousands of custom solutions for end-users around the world. We have had the privilege of working with hundreds of Sage consultants, resellers, and end-users to produce powerful custom solutions that enhance the functionality of Sage 100.

Contact DSD Enhancements

 enhancements@dsdinc.com

 [Enhancements Marketplace](#)

 **800-627-9032**