



DSD Business Systems

Sage 100 Enhancements

J009

Full Item Descriptions

JC-1009

Version 7.30



Information in this document is subject to change without notice.

Copyright 1993-2024, DSD Business Systems All rights reserved.

Full Item Descriptions User's Manual
Version 7.30

10 May, 2024

DSD Business Systems
8787 Complex Drive
Suite 400
San Diego, CA 92123
858/550-5900 8:00am to 5:00pm PST
858/550-4900 Fax

Trademarks

ProvideX[®] is a Trademark of Sage Software.

Windows is a trademark of Microsoft Corporation.

Sage 100[®] is a registered trademark of Sage Software.

PXPlus[®] is a registered trademark of PVX Plus technologies

All other product names and brand names are service marks, and/or trademarks or registered trademarks of their respective companies.

This documentation and the software described herein, is prepared and published under license. Sage Software has not tested or verified either the software or any representation in this documentation regarding the software. Sage Software does not make any warranty with respect to either this documentation or the software described herein, and specifically disclaims any warranty, express or implied, with respect hereto, including the warranties of fitness for a particular purpose and merchantability.

Table of Contents

SECTION A: INTRODUCTION **4**

 WEB RESOURCES 4

 SUPPORT 4

 FULL ITEM DESCRIPTIONS FEATURES 5

SECTION B: GETTING STARTED **6**

 REQUIRED LEVELS..... 6

 INSTALLATION..... 6

 DSD ENHANCEMENT CONTROL PANEL..... 8

SECTION C: SETUP **10**

SECTION D: SYSTEM OPERATIONS **11**

SECTION E: UNINSTALL DSD ENHANCEMENTS **15**

Section A: Introduction

This manual contains a description and instructions for this DSD product. Operating instructions are included for the features added by this product to Sage 100. For instructions on using Sage 100, refer to the appropriate Sage 100 manual, or call your Sage 100 reseller. DSD Business Systems offers excellent Sage 100 support, at an hourly rate.

Web Resources

DSD web site: <http://www.dsdinc.com>

The Enhancement page contains:

- Current Release Schedule*
- Purchasing Information*
- Installation Instructions*
- Product Support*
- Enhancement Links*

J009 Full Item Descriptions:

<https://development.dsdinc.com/enhancement/full-item-descriptions-2/>

The product web page contains:

- Product Description*
- Web Links*
- Current Product Version Table*
- Product Installation File Download*
- Product Manual in .pdf Format*
- Revision History*
- FAQ*

Support

DSD provides product support through Sage 100 resellers. Support is provided for the current version. Older versions are supported at an hourly rate. DSD's telephone number is **858-550-5900**. Fax: **858-550-4900**.

For a hard error, where the program displays an error dialog, report:

- Error number.*
- Program name.*
- Line number.*
- Program version.*
- Exact sequence that caused the error, including menus and menu selections.*
- Other pertinent information.*

If leaving a message or faxing, please include:

Your name.

Your phone number (and fax if applicable) and extension.

It is possible to be unable to duplicate a problem, because of data corruption or because we have not exactly duplicated a particular operating environment. In such circumstances, we can only continue to try to fix the problem if we can either access the system remotely or by some other to duplicate the system.

Full Item Descriptions Features

This DSD Extended Solution to the Job Cost module allows the full description of inventory items to print on the Billing Selection Listing, Job Transaction Detail Report and Job Invoices. The full descriptions are issued to a job from Inventory or received to a job from Purchase Order. In addition, depending upon your configuration, you may print the Purchase Order and Vendor Names for P/O transactions and the transaction header Comment for I/M transactions. A Reformat Full Item Description Data Utility has also been added.

DSD Extended Solutions IM-1090: *Extended Item Information Posting to Job Cost* and/or PO-1044: *Custom Comment Post to Job Cost* must be installed and enabled in order for this Extended Solution to function depending on whether Job Cost Posting is being performed from Purchase Order or Inventory Transaction Entry.

Section B: Getting Started

CAUTION

• If you reinstall or upgrade one of the Sage 100 modules listed in the following table, you must also reinstall this Enhancement.

• Enhancements from different Sage Developers are generally not designed to work together. If installed together, problems are likely to occur.

- Check with DSD before installing more than one Enhancement.

Required Levels

Sage 100 Module	Module Required	Required Level
J/C	Y	7.30
I/M	N	7.30
P/O	N	7.30

Installation

1. **Back-up:** Exit all Sage 100 sessions. Back-up existing Sage 100 data.
2. **Check Levels:** Sage 100 module levels **must match** those listed above.
3. **Run Enhancement Setup Program:** Save the executable installation program (sent to you or downloaded from our website) in a convenient location on the Sage 100 server. Launch the program from Windows Explorer or by selecting Start/Run, and then browse for the file in the location you saved it. Follow on-screen instructions.
4. **Send your Sage Serial Number to your DSD Representative:** Send your Sage Serial Number to your DSD representative in order for us to send you back the encrypted keys to unlock your system. This serial number can be found in Library Master\Setup\System Configuration, Tab 3. Registration as Serial Number.
5. **Re-Start Sage 100:** Sage 100 will be updated.
6. **Unlock the Enhancement:** DSD Enhancements must be unlocked to run. When any part of the Enhancement is run for the first time, the **DSD Enhancement License Agreement and Activation** window will appear. Follow the steps shown on that window. *You can click the Help button for more detailed instructions.*

Note: On the next page is a screenshot of the DSD Enhancement License Agreement and Activation window.

After accepting the License Agreement, you can then select the type of unlocking that you'd prefer. The choices are File, Web, Demo and Manual Entry.

File Unlock: After receiving your encrypted serial number key file from DSD, and placing that file in the MAS90/SOA directory, selecting this option will unlock all products keys contained in the file. This means you can unlock all enhancements at once using this option.

Web Unlock: If the system that is running the DSD Enhancement *has web access* and you *have sent DSD your Sage Serial number*, you can unlock the Enhancement without assistance using Web Unlock. When this option is selected, the program will attempt to download encrypted serial number key file from DSD *and then proceed to unlock all enhancements contained in the file*.

- *The Sage 100 system that is being used must have web access for this option to be effective.*
- *You can send your Sage Serial Number to your DSD Enhancements sales representative.*

Demo Unlock: If a Demo mode is available for the Enhancement you're running, you will be able to Demo unlock the product without assistance from DSD for demo purposes.

- *Creating a Demo Unlock is a good way to temporarily unlock DSD Enhancements off-hours, if you do not have web or email access. Later, you can unlock the product fully, during business hours.*

Manual Entry Unlock: If you want to unlock a single enhancement using a single encrypted key, you can select this option and enter the 64 character key you receive from DSD by copy and paste.

Note: *You can also unlock a DSD Enhancement through the [DSD Enhancement Control Panel](#) found on the Library Master Utilities Menu. Then, select the Enhancement with your mouse from the list of Enhancements and click the **Unlock Product** button on the right side of the window.*

- Convert Data:** After unlocking, the DSD Conversion Wizard will appear. Follow on-screen instructions to complete data conversion. *You can exit the conversion program without converting data. The Enhancement will not proceed, however, until data is converted. If you enter an enhanced program and data has not been converted, the conversion program will run again.*

DSD Enhancement Control Panel

Starting with version 3.61, all DSD Enhancement products include DSD's Enhancement Control Panel. The **DSD Enhancement Control Panel is accessed from the Library Master Utilities menu.**

The DSD Enhancement Control Panel is a simple to use yet powerful system to help maintain DSD Enhancements installed on a Sage 100 system. To use it, select an Enhancement product from the list on the window and then click the button, on the right side of the window, which corresponds with the desired task.

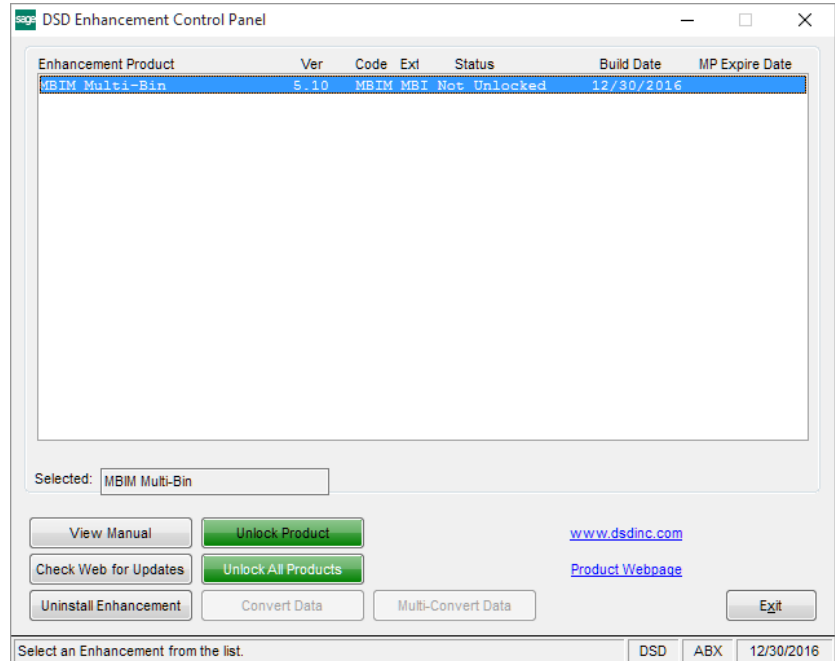
View Manual: This button will display the product manual for the selected Enhancement using Adobe Acrobat. For this to be possible, the PDF file for the corresponding manual must be in the "MAS90/PDF" folder in the Sage 100 system. If the file is not present, and the system has web access, the correct PDF file will be automatically downloaded from the DSD website, put into the "MAS90/PDF" folder and then displayed.

Check the Web for Updates: This button will check the DSD website to see what the current build is the selected Enhancement and alert the user if a later version is available. *This requires an internet connection on the Sage 100 system.*

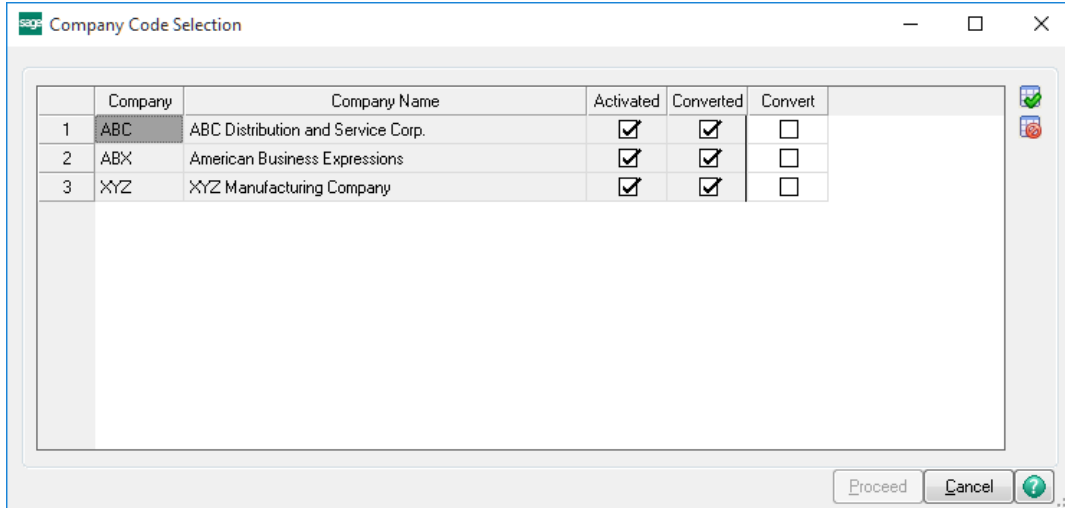
Unlock Product: This will cause the DSD Enhancement License Agreement and Activation window to appear. Using this window is described on the previous page. *This button is disabled if the selected Enhancement is already unlocked or if unlocking is not required.*

Unlock All Products: This will cause the DSD Enhancement All License Agreement and Activation window to appear. This window is similar to the one described on the previous page, but has only web and file as options to unlock. *This button is never disabled.*

Convert Data: After verification, the selected Enhancement's data conversion program will run. Data conversion is non-destructive, and may be triggered any number of times. Sometimes this is required to fix data records imported or updated from a non-enhancement installation.



Multi-Convert Data: Multiple Companies can be converted at the same time for a given Enhancement. *(If you have a large number of Companies to convert, please do in batches of 20 or fewer due to memory limitations.)*



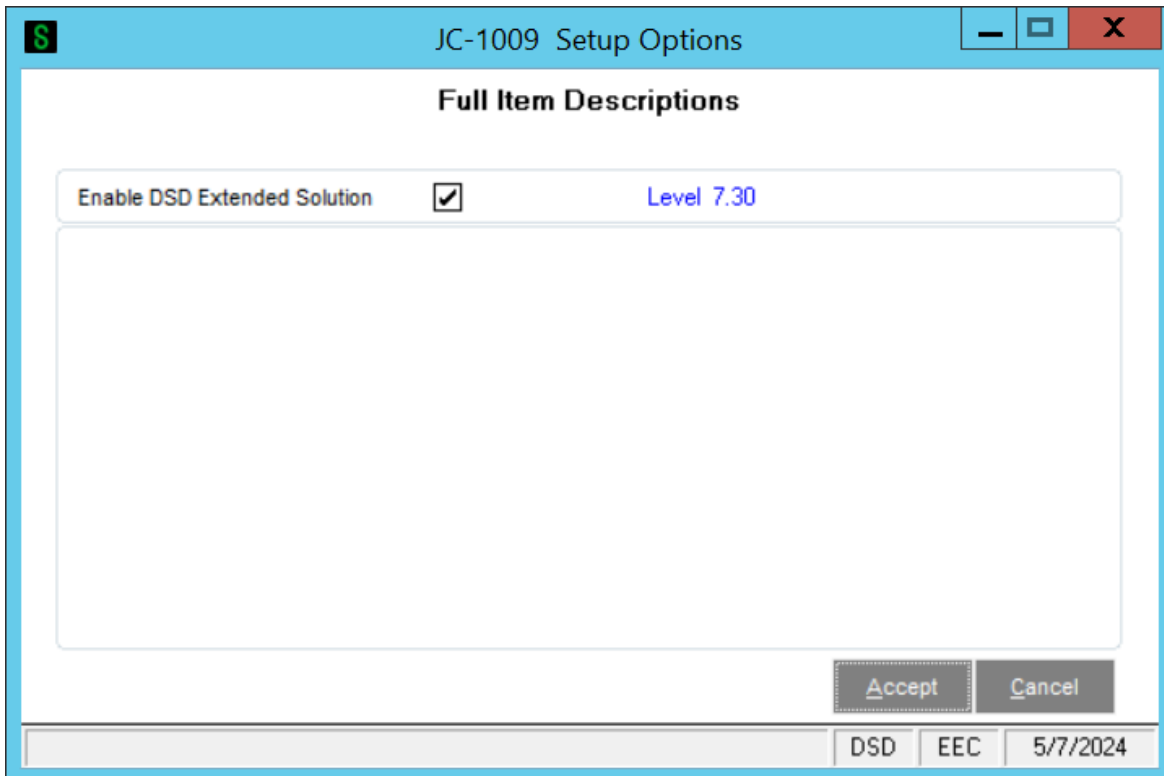
Help: The Help button, located at the bottom right of the window, opens an HTML help file.

Get Adobe Acrobat: Opens the Adobe Acrobat website to the page where Acrobat can be downloaded and installed.

Uninstall Enhancement If this option is available, then selecting this button will start the un-install process, removing the enhancement from the system. (for more information see [Uninstall DSD Enhancements](#))

Section C: Setup

Upon completion of software installation, you will need to access the DSD Extended Solutions Setup from the Job Cost Setup menu. Select this part number and the Setup screen for this Extended Solution will appear. Check the 'Enable DSD Extended Solution' box to activate this Extended Solution.



You should visit this Setup screen after each upgrade or reinstallation of this Extended Solution.

If the Reformat Full Item Description Data Utility has not previously been added to a menu, a pop-up screen will be presented allowing you to automatically add this Extended Solution to the selected menu. Answer 'No' if you want to use standard Sage 100 Menu Maintenance to add the program to a different menu of your choice.

Section D: System Operations

Update Process

If PO-1044 is enabled, the Job Transaction Posting Comment will be changed (per PO-1044 Setup) and the Item Code description and PO Number will be recorded during Receipt of Goods/Invoice update, Return of Goods update and Material Requisition update. If IM-1090 is enabled, Item Code description and Transaction Header Comment will be recorded during Transaction Register update. Upon completion of their respective updates, this Extended Posting Information becomes available to the following Job Cost Reports and Job Invoice Printing.

Job Billing Selection Listing

The Job Billing Selection Listing will print the Item Code, and Item Code description where available. In the case of special and miscellaneous items which are received to a job from purchase order, the full Item Code description from the purchase order is used. If available, the Transaction Header Comment will be printed.

Job Billing Selection Listing Edwardson Electric Company (EEC)

Job No	Description	Customer: 01-A&H Adams & Hanks	Type: 000	Bill Date: 9/21/2026
J009	JC-1009			
Manager:	Bill Method: TIME	Ret Rate: 0.00%	Terms: 01 SP: 0100	Comm Rate: 2.00
Rev Cont: 0.00	ACT %Cmplt: 0.00%	Billable: 100,000.00	INV No: 0002551	INV Date: 9/21/2026
Rev Est: 0.00	CALC %Cmplt: 0.00%	Sales Tax: 7,250.00	BatchNo: 00001	
JTD Cost: 1,800.00	Billed To Date: 0.00	Retention: 0.00	INV Total: 107,250.00	

Cost Code	Type	Billed Vendor No	Description	Bill Method	U/M	Unbilled Unit	Unbilled Cost	Bill Rate	Unit Price	Bill Amount
100-020-000	M	Y	REF: 00000004 ITEM: (TIME 1 INCH PIPE COUPLER		EACH	1,000.00	1,800.00		100.00	100,000.00

Net Invoice:	100,000.00
Report Total:	107,250.00

Current Page No.: 1 Total Page No.: 1 Zoom Factor: 100%

Job Transaction Detail Report

The Job Transaction Detail Report includes an option to print an enhanced reference comment by clicking the 'Ref Comment' button. This option will print the Item Code, and Item Code description where available. In the case of special and miscellaneous items which are received to a job from Purchase order, the full Item Code description from the purchase order is used. If available, the Transaction Header Comment will be printed.

The screenshot shows the 'Job Transaction Detail Report (EEC) 9/18/2023' window. The main interface includes sections for Report Setting (STANDARD), Description (Job Transaction Detail Report), Setting Options (Type: Public, Default Report: checked), Sort Report By (Job Number), Job Statuses to Print (All Statuses, Bid, Complete, Hold, Late Charge, Open, Closed), Cost Types to Print (All Cost Types, B,E,L,M,O,S), Options (Print Transaction Detail, Print Total Labor Units, Additional Information to Print: Estimate Detail), and Selections (table with columns Select Field, Operand, Value). A 'Reference Comment' dialog box is open, showing a 'Normal' preference and 'Accept'/'Cancel' buttons. At the bottom, there is a 'Microsoft Print to PDF' dropdown, 'Keep Window Open After' options (Print, Preview), and 'Print', 'Preview', 'Setup' buttons.

Select Field	Operand	Value
Job Number	All	
Job Type	All	
Transaction Date	All	
Customer Number	All	

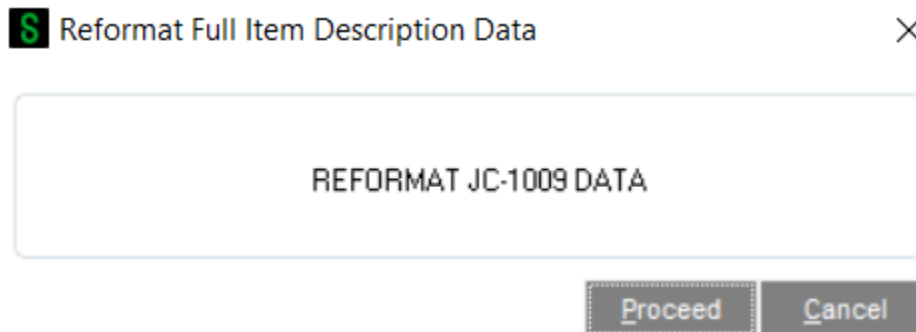
Edwardson Electric Company										
JOB TRANSACTION DETAIL REPORT										
JOB NUMBER: EEC2140		Saddleback-Hospital Remodel		CUSTOMER NO: 01-SADDLE Saddleback Community Hospital		START DATE: 05/01/03				
JOB TYPE: 001 Contract Billing		JOB STATUS: O OPEN		BILL METHOD: T TIME & MATR ESTIMATOR: JACOBS		COMPL DATE: 08/31/03				
CONTRACT NO: 2250-RTJ		% COMPLETE: 60.00%		STATUS DATE: 05/31/03		MANAGER: ELLIOTT		REV. CONTRACT: 36,450.00		
				CONTR DATE: 04/25/03		REV. ESTIMATE: 33,515.00		SQ FEET: 10,000		
				REPORTED DATE: 05/15/03				CALC% CMP: 57.39%		
COST CODE/ TYPE	TRANS DATE	SRC	REFERENCE/POSTING	REMARKS	BILLED?	UNIT COST	UNITS	DOLLARS	REVISED ESTIMATE	% OF ESTMT
100-040-000			Underground Work - Wire Pull							
		M	Material		U/M: Feet	0.9000			.00	
05/31/03	PO		0000178	FLEX-1	N	1.8500	60.0000	111.00		.0%
03/03/11	IM		REF: 00000002		N	0.2800	500.0000	140.00		.0%
ITEM: 100-WT-WH				100 WATT WHITE BULB	COMMENT: Additional supplies needed					
03/03/11	IM		REF: 00000002		N	0.2800	500.0000	140.00		.0%
ITEM: #10 OUTDOOR				10 GAUGE EXTERIOR WIRE	COMMENT: Original supply order					
03/03/11	IM		REF: 00000002		N	0.2000	600.0000	120.00		.0%
ITEM: #12 INDOOR				12 GAUGE INDOOR WIRE	COMMENT: Original supply order					
03/03/11	IM		REF: 00000002		N	0.2600	300.0000	78.00		.0%
ITEM: #12 OUTDOOR				12 GAUGE EXTERIOR WIRE	COMMENT: Original supply order					
03/03/11	IM		REF: 00000002		N	0.9000	150.0000	135.00		.0%
ITEM: 100-WT-WH				100 WATT WHITE BULB	COMMENT: Original supply order					
03/03/11	IM		REF: 00000003		N	0.2800	150.0000	42.00		.0%
ITEM: #10 INDOOR				10 GAUGE INDOOR WIRE	COMMENT: Additional supplies needed					
03/03/11	IM		REF: 00000003		N	0.2800	75.0000	21.00		.0%
ITEM: #10 OUTDOOR				10 GAUGE EXTERIOR WIRE	COMMENT: Additional supplies needed					
03/03/11	IM		REF: 10000003		N	0.2000	100.0000	20.00		.0%
ITEM: #12 INDOOR				12 GAUGE INDOOR WIRE	COMMENT: Additional supplies needed					
03/03/11	IM		REF: 00000003		N	0.2600	125.0000	32.50		.0%
ITEM: #12 OUTDOOR				12 GAUGE EXTERIOR WIRE	COMMENT: Additional supplies needed					
03/03/11	IM		REF: 00000003		N	0.9000	30.0000	27.00		.0%
ITEM: 100-WT-WH				100 WATT WHITE BULB	COMMENT: Additional supplies needed					
COST TYPE M TOTAL:						0.3346	2590.0000	866.50	.00	.0%
COST CODE 100-040-000 TOTAL:								866.50	.00	.0%
JOB EEC2140 TOTAL:								866.50	.00	.0%

Job Invoice Printing

Fields for Item Code, Item Code Description, PO Number, PO Purchase Name and IM Transaction comment are available to print.

Reformat Full Item Description Data Utility

A utility has been added to the JC Setup menu to reformat the data entered prior to the installation of this Extended Solution.



This utility will only run with PO-1044: *Custom Comment Post to Job Cost* if you are using comment format 'Vendor No + Invoice No + Item Description.'

It will reformat the JC3 Transaction Comment for 'PO' records and will reformat the JC_TransactionDetail file data for 'IM' and 'PO' records. It will obtain the PO Item Description by

looking at the first PO History detail line it can find for that Item Number. It will obtain the IM Item Description by reading the current Inventory Masterfile Item Description. It cannot obtain the I/M Transaction Header Comment.

Helpful Hints

- Full Item Information and Extended Posting Information, for either PO or IM, is recorded during updates. Job Cost transactions updated before either PO-1044 or IM-1090 were enabled will not contain these descriptions.

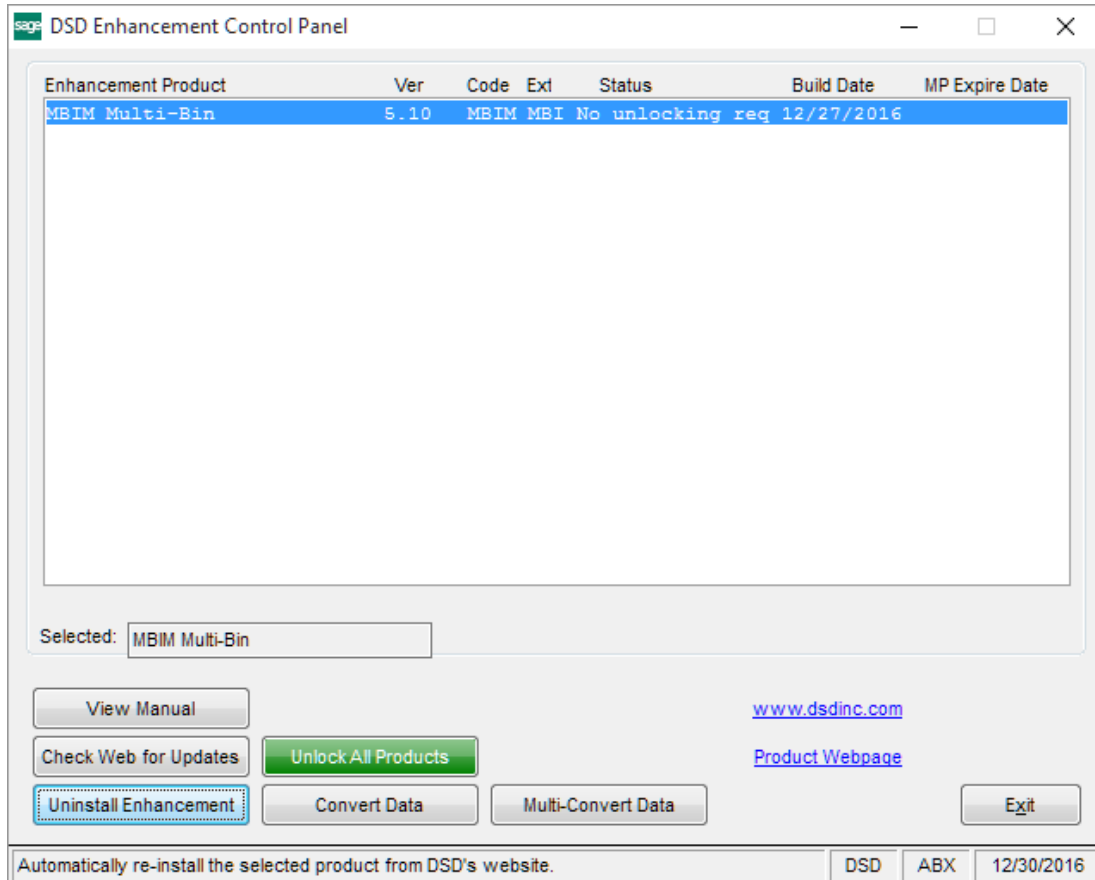
Dictionary

Fields; PurchaseOrderNo_001, ItemCode_001, ItemCodeDesc_001 and Comment_001 have been added to the following files:

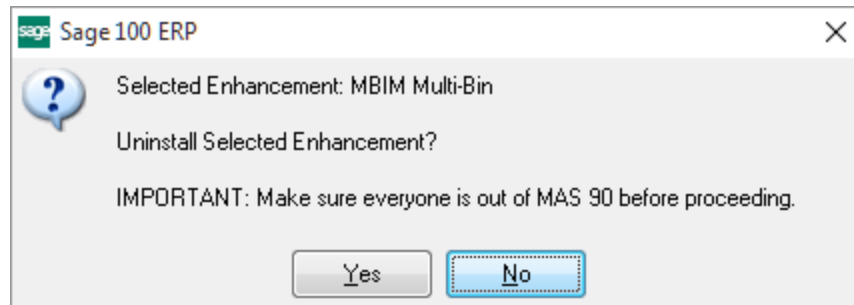
JC_JobBillingDetail, JC_JobBillingSelectWrk, JC_JobTransactionDetail, and JC_JobTransactionDetailWrk, In addition, JC_InvoiceWrk adds a VendorName_001 field.

Section E: Uninstall DSD Enhancements

A DSD Enhancements Uninstall Utility has been provided for the purposes of removing DSD Enhancements from your Sage 100 System. This utility may be accessed from the **DSD Enhancement Control Panel** menu option on the **Library Master / Utilities** menu.

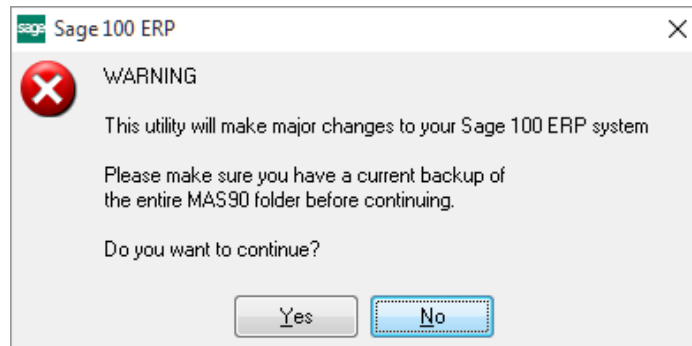


When accessing the **DSD Enhancement Control**, select the enhancement that you wish to Uninstall, and then select the **Uninstall Enhancement** button. The following message box will appear:



Select **No** to exit the Uninstall Process.
 Select **Yes** to continue with the Uninstall Process.

The following message box will appear, to remind you that a complete backup of your entire Sage 100 system should be completed prior to uninstalling a DSD product.



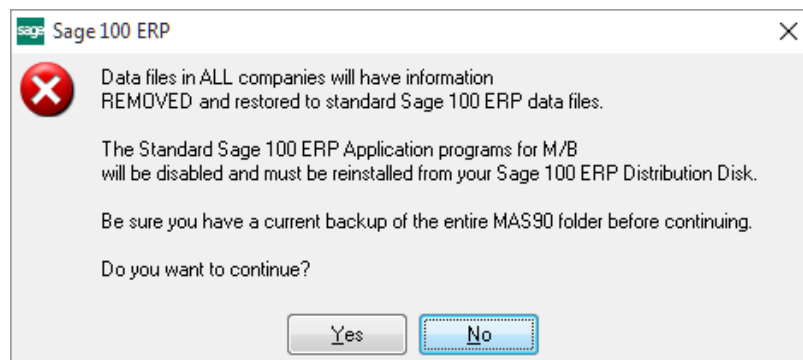
Select **No** to exit the Uninstall Process.
Select **Yes** to continue with the Uninstall Process.

After the Uninstall of the DSD Enhancement, you MUST reinstall certain standard Sage 100 modules, followed by reinstallation of Product Updates and Hot Fixes, if applicable.

A message box will appear, and will display which of those specific Sage 100 modules you must reinstall afterwards.

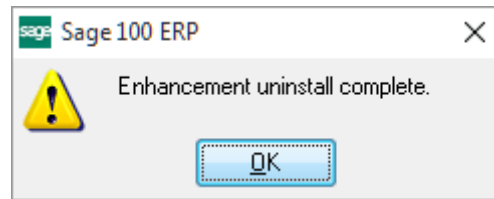
Select **No** to exit the Uninstall Process.
Select **Yes** to continue with the Uninstall Process.

The following message box will appear, displaying the final warning message.



Select **No** to exit the Uninstall Process.
Select **Yes** to continue with the Uninstall Process. At this point, the DSD Enhancement will be removed from the Sage 100 system.

After completion of the Uninstall, the following message box will appear. Select OK to continue.



Now that the Uninstall process is completed, you must:

- Reinstall the applicable standard Sage 100 modules
- Reinstall the latest Sage 100 Service Pack/Updates, if applicable.
- Reinstall any other DSD Enhancements or Developer products that are affected from the reinstallation of the standard Sage 100 module(s).