



DSD Business Systems

Sage 100 Enhancements

J158

Cost & Price Summary Reports by Cost Code

JC-1158

Version 5.40



Information in this document is subject to change without notice.

Copyright 1993-2017, DSD Business Systems All rights reserved.

Cost & Price Summary Reports by Cost Code User's Manual
Version 5.40

7 August, 2017

DSD Business Systems
8787 Complex Drive
Suite 400
San Diego, CA 92123
858/550-5900 8:00am to 5:00pm PST
858/550-4900 Fax

Trademarks

ProvideX® is a Trademark of Sage Software.

Windows is a trademark of Microsoft Corporation.

Sage 100® is a registered trademark of Sage Software.

PXPlus® is a registered trademark of PVX Plus technologies

All other product names and brand names are service marks, and/or trademarks or registered trademarks of their respective companies.

This documentation and the software described herein, is prepared and published under license. Sage Software has not tested or verified either the software or any representation in this documentation regarding the software. Sage Software does not make any warranty with respect to either this documentation or the software described herein, and specifically disclaims any warranty, express or implied, with respect hereto, including the warranties of fitness for a particular purpose and merchantability.

Table of Contents

SECTION A: INTRODUCTION	4
WEB RESOURCES	4
SUPPORT	4
COST & PRICE SUMMARY REPORTS BY COST CODE FEATURES	5
SECTION B: GETTING STARTED	6
REQUIRED LEVELS	6
INSTALLATION	6
DSD ENHANCEMENT CONTROL PANEL	8
SECTION C: SETUP	10
SECTION D: SYSTEM OPERATIONS	11
SECTION E: UNINSTALL DSD ENHANCEMENTS	14

Section A: Introduction

This manual contains a description and instructions for this DSD product. Operating instructions are included for the features added by this product to Sage 100. For instructions on using Sage 100, refer to the appropriate Sage 100 manual, or call your Sage 100 reseller. DSD Business Systems offers excellent Sage 100 support, at an hourly rate.

Web Resources

DSD web site: <http://www.dsdinc.com>

The Enhancement page contains:

- Current Release Schedule*
- Purchasing Information*
- Installation Instructions*
- Product Support*
- Enhancement Links*

1158 Cost & Price Summary Reports by Cost Code:

<http://www.dsdinc.com/enh/pages/J158.htm>

The product web page contains:

- Product Description*
- Web Links*
- Current Product Version Table*
- Product Installation File Download*
- Product Manual in .pdf Format*
- Revision History*
- FAQ*

Support

DSD provides product support through Sage 100 resellers. Support is provided for the current version. Older versions are supported at an hourly rate. DSD's telephone number is **858-550-5900**. Fax: **858-550-4900**.

For a hard error, where the program displays an error dialog, report:

- Error number.*
- Program name.*
- Line number.*
- Program version.*

*Exact sequence that caused the error, including menus and menu selections.
Other pertinent information.*

If leaving a message or faxing, please include:

Your name.

Your phone number (and fax if applicable) and extension.

It is possible to be unable to duplicate a problem, because of data corruption or because we have not exactly duplicated a particular operating environment. In such circumstances, we can only continue to try to fix the problem if we can either access the system remotely or by some other to duplicate the system.

Cost & Price Summary Reports by Cost Code Features

This Extended Solution adds a summary report to the Job Cost module which can be run with costing information for internal use or with calculated pricing information for presentation to the customer. Pricing is calculated by applying a run time markup percentage to the costs. The report reflects data from the Job Transaction Detail file as well as the Open Purchase Order file.

The Inventory module cannot be Activated and Extended Solution JC-1157: Job Pay Rate Type must be enabled in order for this Extended Solution to function.

Section B: Getting Started

CAUTION

- If you reinstall or upgrade one of the Sage 100 modules listed in the following table, you must also reinstall this Enhancement.
- Enhancements from different Sage Developers are generally not designed to work together. If installed together, problems are likely to occur.
- Check with DSD before installing more than one Enhancement.

Required Levels

Sage 100 Module	Module Required	Required Level
J/C	Y	5.40

Installation

1. **Back-up:** Exit all Sage 100 sessions. Back-up existing Sage 100 data.
2. **Check Levels:** Sage 100 module levels **must match** those listed above.
3. **Run Enhancement Setup Program:** Save the executable installation program (sent to you or downloaded from our website) in a convenient location on the Sage 100 server. Launch the program from Windows Explorer or by selecting Start/Run, and then browse for the file in the location you saved it. Follow on-screen instructions.
4. **Send your Sage Serial Number to your DSD Representative:** Send your Sage Serial Number to your DSD representative in order for us to send you back the encrypted keys to unlock your system. This serial number can be found in Library Master\Setup\System Configuration, Tab 3. Registration as Serial Number.
5. **Re-Start Sage 100:** Sage 100 will be updated.
6. **Unlock the Enhancement:** DSD Enhancements must be unlocked to run. When any part of the Enhancement is run for the first time, the **DSD Enhancement License Agreement and Activation** window will appear. Follow the steps shown on that window. *You can click the Help button for more detailed instructions.*

Note: On the next page is a screenshot of the DSD Enhancement License Agreement and Activation window.

After accepting the License Agreement, you can then select the type of unlocking that you'd prefer. The choices are File, Web, Demo and Manual Entry.

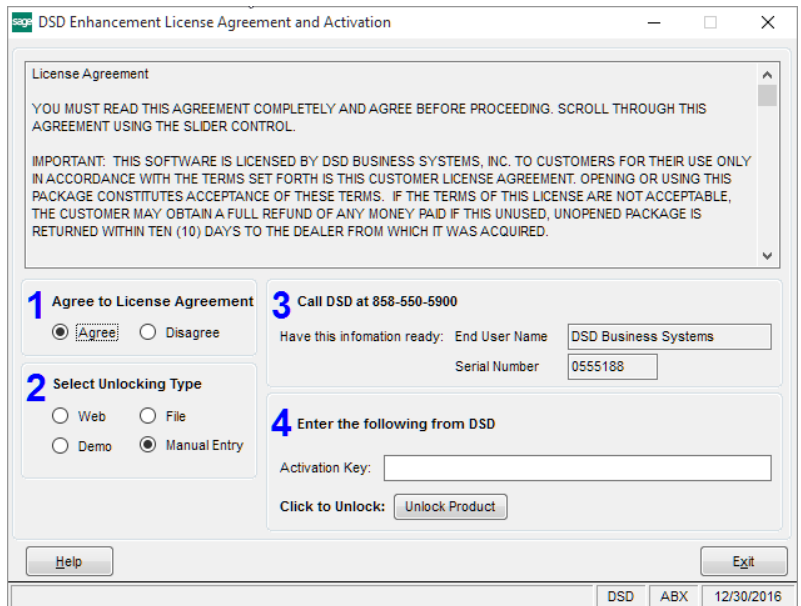
File Unlock: After receiving your encrypted serial number key file from DSD, and placing that file in the MAS90/SOA directory, selecting this option will unlock all products keys contained in the file. This means you can unlock all enhancements at once using this option.

Web Unlock: If the system that is running the DSD Enhancement *has web access* and you *have sent DSD your Sage Serial number*, you can unlock the Enhancement without assistance using Web Unlock. When this option is selected, the program will attempt to download encrypted serial number key file from DSD *and then proceed to unlock all enhancements contained in the file.*

- The Sage 100 system that is being used must have web access for this option to be effective.
- You can send your Sage Serial Number to your DSD Enhancements sales representative.

Demo Unlock: If a Demo mode is available for the Enhancement you're running, you will be able to Demo unlock the product without assistance from DSD for demo purposes.

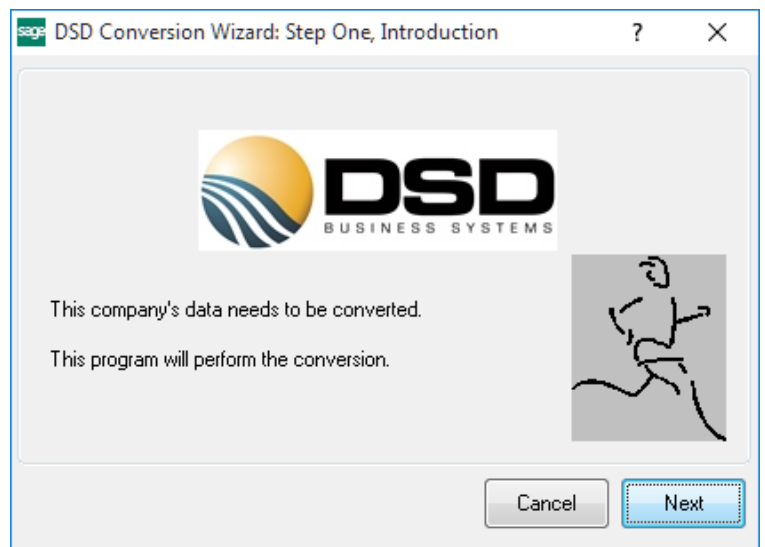
- Creating a Demo Unlock is a good way to temporarily unlock DSD Enhancements off-hours, if you do not have web or email access. Later, you can unlock the product fully, during business hours.



Manual Entry Unlock: If you want to unlock a single enhancement using a single encrypted key, you can select this option and enter the 64 character key you receive from DSD by copy and paste.

Note: You can also unlock a DSD Enhancement through the [DSD Enhancement Control Panel](#) found on the Library Master Utilities Menu. Then, select the Enhancement with your mouse from the list of Enhancements and click the **Unlock Product** button on the right side of the window.

- Convert Data:** After unlocking, the DSD Conversion Wizard will appear. Follow on-screen instructions to complete data conversion. *You can exit the conversion program without converting data. The Enhancement will not proceed, however, until data is converted. If you enter an enhanced program and data has not been converted, the conversion program will run again.*



DSD Enhancement Control Panel

Starting with version 3.61, all DSD Enhancement products include DSD's Enhancement Control Panel. The **DSD Enhancement Control Panel** is accessed from the **Library Master Utilities** menu.

The DSD Enhancement Control Panel is a simple to use yet powerful system to help maintain DSD Enhancements installed on a Sage 100 system. To use it, select an Enhancement product from the list on the window and then click the button, on the right side of the window, which corresponds with the desired task.

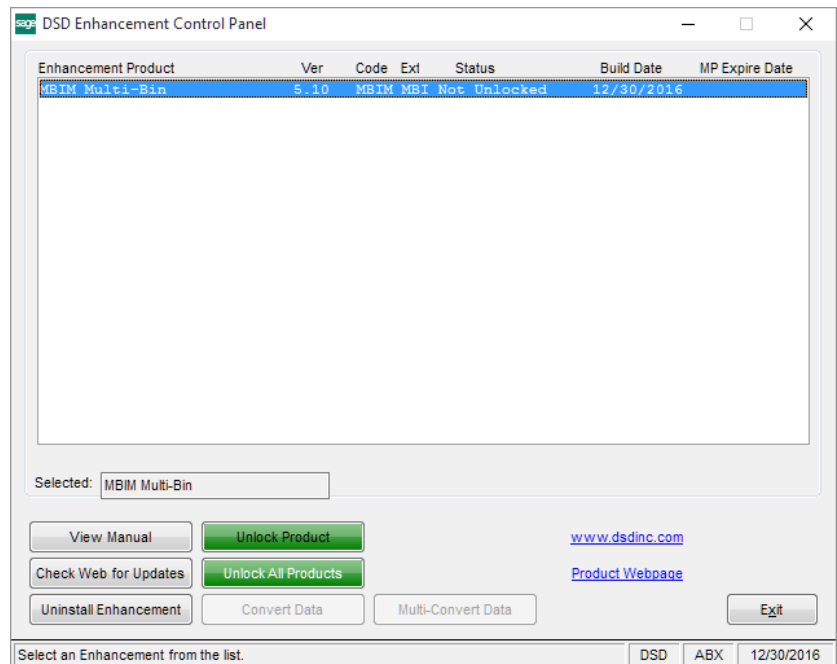
View Manual: This button will display the product manual for the selected Enhancement using Adobe Acrobat. For this to be possible, the PDF file for the corresponding manual must be in the "MAS90/PDF" folder in the Sage 100 system. If the file is not present, and the system has web access, the correct PDF file will be automatically downloaded from the DSD website, put into the "MAS90/PDF" folder and then displayed.

Check the Web for Updates: This button will check the DSD website to see what the current build is the selected Enhancement and alert the user if a later version is available. *This requires an internet connection on the Sage 100 system.*

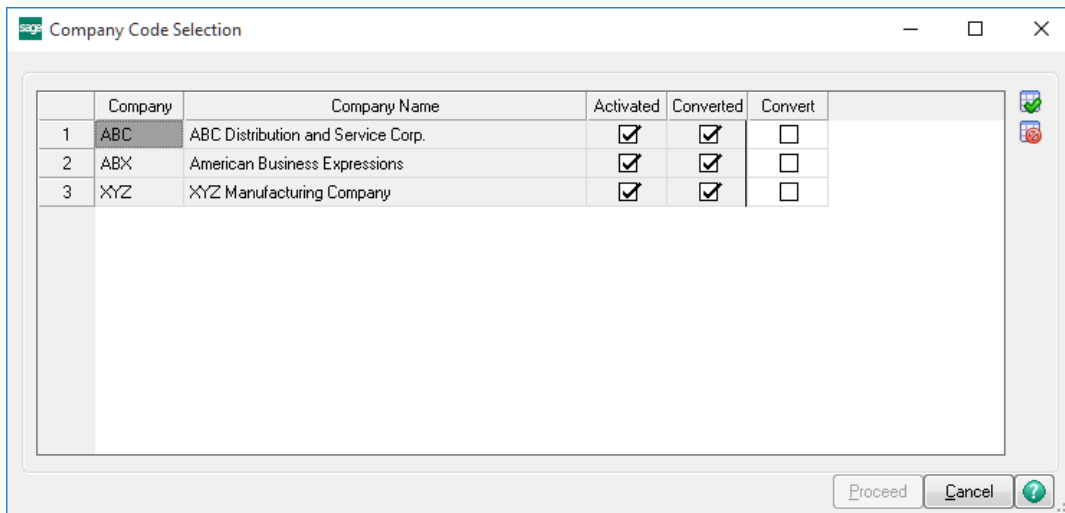
Unlock Product: This will cause the DSD Enhancement License Agreement and Activation window to appear. Using this window is described on the previous page. *This button is disabled if the selected Enhancement is already unlocked or if unlocking is not required.*

Unlock All Products: This will cause the DSD Enhancement All License Agreement and Activation window to appear. This window is similar to the one described on the previous page, but has only web and file as options to unlock. *This button is never disabled.*

Convert Data: After verification, the selected Enhancement's data conversion program will run. Data conversion is non-destructive, and may be triggered any number of times. Sometimes this is required to fix data records imported or updated from a non-enhancement installation.



Multi-Convert Data: Multiple Companies can be converted at the same time for a given Enhancement. *(If you have a large number of Companies to convert, please do in batches of 20 or fewer due to memory limitations.)*



Help: The Help button, located at the bottom right of the window, opens an HTML help file.

Get Adobe Acrobat: Opens the Adobe Acrobat website to the page where Acrobat can be downloaded and installed.

Uninstall Enhancement If this option is available, then selecting this button will start the un-install process, removing the enhancement from the system. (for more information see [Uninstall DSD Enhancements](#))

Section C: Setup

Upon completion of software installation, you will need to access the DSD Extended Solutions Setup from the Job Cost Setup menu. Select this part number and the Setup screen for this Extended Solution will appear. Check the 'Enable DSD Extended Solution' box to activate this Extended Solution.

The screenshot shows a software dialog box titled "JC-1158 Setup Options". The main content area is titled "JC-1158 Cost/Price Summary Rpt". It contains two configuration options: "Enable DSD Extended Solution" which is checked, and "Level 5.40" displayed in blue text. Below this is "Default Price Markup Rate" with a text input field containing "22.00%". At the bottom right of the dialog are "Accept" and "Cancel" buttons. A footer bar at the bottom of the window displays "DSD", "EEC", and the date "8/4/2017".

Answer the following prompt:

Default Price Markup Rate: Specify the default value to be used on the report selection screen when printing the Price format.

Roles Maintenance

The following Task has been added to Job Cost, Reports/Forms:

- Job Summary Report

Please review your security setup in Role Maintenance and make appropriate changes.

You should visit this Setup screen after each upgrade or reinstallation of this Extended Solution.

Section D: System Operations

The Job Summary Report has been added to the Job Cost Report menu. When accessed it will prompt you for the format of the report you wish to print: Cost or Price, the applicable job statuses, a range of job numbers, job types and transaction dates.

Cost Format

When Cost is selected the report will print a sub heading of 'Cost Report'; it will sort and page break by Job Number, listing one line per Cost Code noted in the Job Transaction Detail file or the Open Purchase Order file where the date of the transaction or the header date of the Purchase Order falls in the defined range. 'CO' and 'PY' source transactions will be ignored.

We make no warranty to the speed at which either format of this report will generate.

Job Summary Report Cost Report		Edwardson Electric Company (EEC)						
Job No: EEC2140 Saddleback-Hospital Remodel		AR Customer No: -						
Cost Code	Description	Straight Hours	Overtime Hours	Doubletime Hours	Labor Cost	Material Cost	Subcont Cost	Total Cost
100-010-000	Underground Work - Digging	71.00	9.00	0.00	2,050.00	0.00	0.00	2,050.00
							100010 Total:	2,050.00
100-030-000	Underground Work - Piping	18.00	3.00	5.00	775.00	3,500.04	0.00	4,275.04
							100030 Total:	4,275.04
100-040-000	Underground Work - Wire Pull	15.00	3.00	0.00	487.50	1,875.00	0.00	2,362.50
							100040 Total:	2,362.50
100-090-000	Underground Work - Burden	0.00	0.00	0.00	0.00	0.00	857.39	857.39
							100090 Total:	857.39
EEC2140 Job Totals:		104.00	15.00	5.00	3,312.50	5,375.04	857.39	9,544.93
Report Totals:		104.00	15.00	5.00	3,312.50	5,375.04	857.39	9,544.93

The Straight Time, Overtime and Doubletime Hours columns are populated by Cost Type 'L' data from the Transaction Units from the Job Cost Transaction Detail File. Which column the units go into is determined by the value of the JC-1157 Pay Rate Type field (S, O, or D). If the Pay Rate Type field is not found or is not S, O, or D, then the transaction records are ignored.

The Labor Cost column is the sum of all costs in the Job Transaction Detail file for Cost Type 'L'. The Material Cost column is the sum of all costs in the Job Transaction Detail file for Cost Type 'M' plus the un-invoiced portion of any open Purchase Order line referencing Cost Type M. The P/O portion is calculated as:

$$(\text{Quantity Ordered} - \text{Quantity Invoiced}) * \text{Unit Cost}$$

The SubCont Cost column is the sum of all costs associated with Cost Types other than 'L' or 'M' in the Job Transaction Detail file plus the un-invoiced portion of any open Purchase Order line referencing Cost Types other than 'L' or 'M'. The P/O portion is calculated as:

$$(\text{Quantity Ordered} - \text{Quantity Invoiced}) * \text{Unit Cost}$$

An asterisk appears next to the cost if the value contains data from Purchase Orders. A double asterisk appears if the data pulled from the Purchase Order line has an extension of zero. The report will subtotal the Total Cost column on the first six characters of the cost code. There will be grand totals on all columns for the job. If there are any double asterisks on the report then the notation, "This Job is not yet ready for billing." will print with the totals.

Price Format

When the Price format option is selected, an additional field of entry for Markup % will be available, it defaults to the value entered in Setup, but can be overridden. Specify the Markup percentage to apply to all cost transactions whose type is other than 'L'.

The layout of the report will be the same as outlined above for the Cost format with the following changes:

- the subheading will be 'Billing Rate Report'
- the word 'Price' will be substituted for 'Cost' in the applicable column headings

Job Summary Report Billing Rate Report		Edwardson Electric Company (EEC)						
Job No: EEC2140 Saddleback-Hospital Remodel		AR Customer No: -						
Cost Code	Description	Straight Hours	Overtime Hours	Doubletime Hours	Labor Price	Material Price	Subcont Price	Total Price
100-010-000	Underground Work - Digging	71.00	9.00	0.00	0.00	0.00	0.00	0.00
							100010 Total:	0.00
100-030-000	Underground Work - Piping	18.00	3.00	5.00	0.00	3,867.54	0.00	3,867.54
							100030 Total:	3,867.54
100-040-000	Underground Work - Wire Pull	15.00	3.00	0.00	0.00	2,071.88	0.00	2,071.88
							100040 Total:	2,071.88
100-090-000	Underground Work - Burden	0.00	0.00	0.00	0.00	0.00	947.42	947.42
							100090 Total:	947.42
EEC2140 Job Totals:		104.00	15.00	5.00	0.00	5,939.42	947.42	6,886.84
Report Totals:		104.00	15.00	5.00	0.00	5,939.42	947.42	6,886.84

The value in the Hours columns are calculated the same as noted above for the Cost format of the report. The Labor Price is the sum of the three hours columns multiplied by the Bill Rate field for the Cost Code in Cost Code Maintenance.

If the Bill Method for the Cost Code, Cost Type L, is other than Unit Price, then the resulting value for Labor Price on the report will be zero.

The Material Price column data is derived from all of the same places noted for the Cost format. The costs are then marked up by the Price Markup specified on the selection screen.

The Subcont Price column is calculated in the same manner as the Material Price column, only for Cost Types other than 'L' or 'M'.

ODBC Dictionary

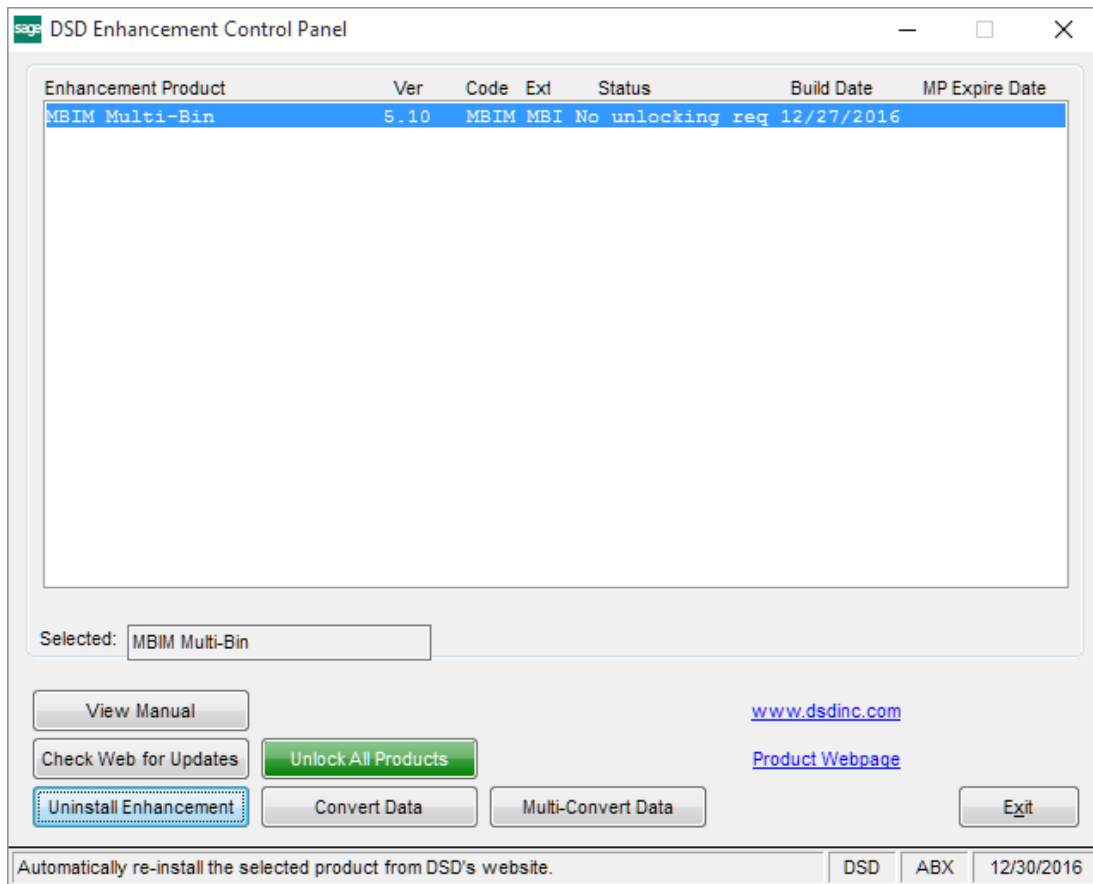
The files listed below have been added, or changed, in the ODBC Dictionaries by this Extended Solution for Crystal Reports purposes.

File	Field
JC_JobSummary_001_Wrk	All

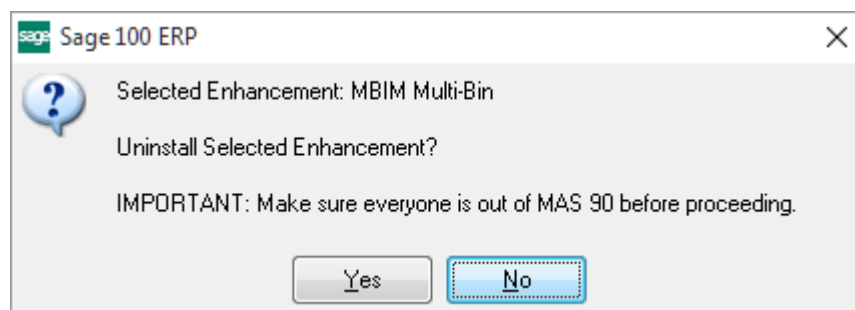
Be aware that the ODBC Dictionaries may contain other files and data fields that will be unavailable without their corresponding Extended Solutions installed.

Section E: Uninstall DSD Enhancements

A DSD Enhancements Uninstall Utility has been provided for the purposes of removing DSD Enhancements from your Sage 100 System. This utility may be accessed from the **DSD Enhancement Control Panel** menu option on the **Library Master / Utilities** menu.



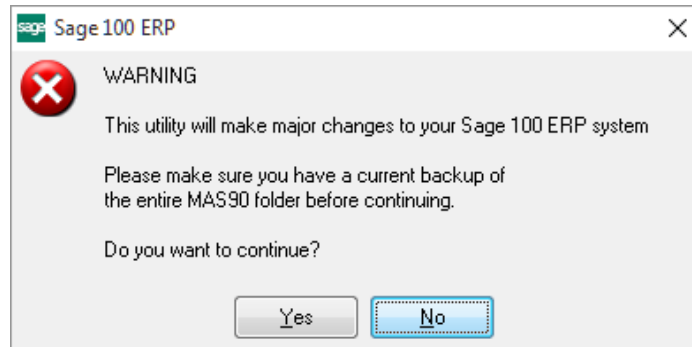
When accessing the **DSD Enhancement Control**, select the enhancement that you wish to Uninstall, and then select the **Uninstall Enhancement** button. The following message box will appear:



Select **No** to exit the Uninstall Process.

Select **Yes** to continue with the Uninstall Process.

The following message box will appear, to remind you that a complete backup of your entire Sage 100 system should be completed prior to uninstalling a DSD product.



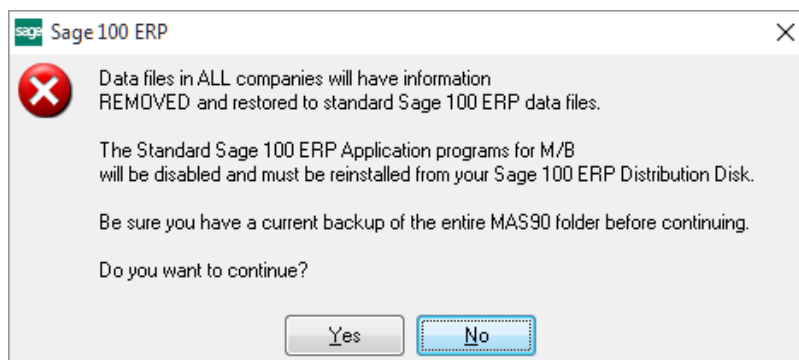
Select **No** to exit the Uninstall Process.
 Select **Yes** to continue with the Uninstall Process.

After the Uninstall of the DSD Enhancement, you MUST reinstall certain standard Sage 100 modules, followed by reinstallation of Product Updates and Hot Fixes, if applicable.

A message box will appear, and will display which of those specific Sage 100 modules you must reinstall afterwards.

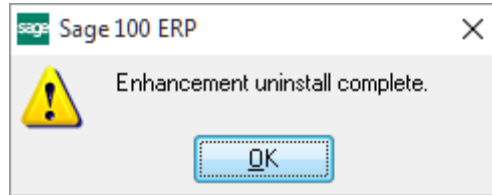
Select **No** to exit the Uninstall Process.
 Select **Yes** to continue with the Uninstall Process.

The following message box will appear, displaying the final warning message.



Select **No** to exit the Uninstall Process.
 Select **Yes** to continue with the Uninstall Process. At this point, the DSD Enhancement will be removed from the Sage 100 system.

After completion of the Uninstall, the following message box will appear. Select OK to continue.



Now that the Uninstall process is completed, you must:

- Reinstall the applicable standard Sage 100 modules
- Reinstall the latest Sage 100 Service Pack/Updates, if applicable.
- Reinstall any other DSD Enhancements or Developer products that are affected from the reinstallation of the standard Sage 100 module(s).