



DSD Business Systems

Sage 100 Enhancements

Q134

Overtime Calculation by Earnings Code

PR-1134

Version 6.10



Information in this document is subject to change without notice.

Copyright 1993-2020, DSD Business Systems All rights reserved.

Overtime Calculation by Earnings Code User's Manual
Version 6.10

23 December, 2020

DSD Business Systems
8787 Complex Drive
Suite 400
San Diego, CA 92123
858/550-5900 8:00am to 5:00pm PST
858/550-4900 Fax

Trademarks

ProvideX® is a Trademark of Sage Software.

Windows is a trademark of Microsoft Corporation.

Sage 100® is a registered trademark of Sage Software.

PXPlus® is a registered trademark of PVX Plus technologies

All other product names and brand names are service marks, and/or trademarks or registered trademarks of their respective companies.

This documentation and the software described herein, is prepared and published under license. Sage Software has not tested or verified either the software or any representation in this documentation regarding the software. Sage Software does not make any warranty with respect to either this documentation or the software described herein, and specifically disclaims any warranty, express or implied, with respect hereto, including the warranties of fitness for a particular purpose and merchantability.

Table of Contents

SECTION A: INTRODUCTION	4
WEB RESOURCES.....	4
SUPPORT.....	4
OVERTIME CALCULATION BY EARNINGS CODE FEATURES	5
SECTION B: GETTING STARTED	6
REQUIRED LEVELS.....	6
INSTALLATION.....	6
DSD ENHANCEMENT CONTROL PANEL.....	8
SECTION C: SETUP	10
SECTION D: SYSTEM OPERATIONS	11
EARNINGS CODE MAINTENANCE	11
PAYROLL DATA ENTRY.....	12
SECTION E: UNINSTALL DSD ENHANCEMENTS	15

Section A: Introduction

This manual contains a description and instructions for this DSD product. Operating instructions are included for the features added by this product to Sage 100. For instructions on using Sage 100, refer to the appropriate Sage 100 manual, or call your Sage 100 reseller. DSD Business Systems offers excellent Sage 100 support, at an hourly rate.

Web Resources

DSD web site: <http://www.dsdinc.com>

The Enhancement page contains:

- Current Release Schedule*
- Purchasing Information*
- Installation Instructions*
- Product Support*
- Enhancement Links*

Q134 Overtime Calculation by Earnings Code:

<http://www.dsdinc.com/enh/pages/Q134.htm>

The product web page contains:

- Product Description*
- Web Links*
- Current Product Version Table*
- Product Installation File Download*
- Product Manual in .pdf Format*
- Revision History*
- FAQ*

Support

DSD provides product support through Sage 100 resellers. Support is provided for the current version. Older versions are supported at an hourly rate. DSD's telephone number is **858-550-5900**. Fax: **858-550-4900**.

For a hard error, where the program displays an error dialog, report:

- Error number.*
- Program name.*
- Line number.*
- Program version.*
- Exact sequence that caused the error, including menus and menu selections.*
- Other pertinent information.*

If leaving a message or faxing, please include:

Your name.

Your phone number (and fax if applicable) and extension.

It is possible to be unable to duplicate a problem, because of data corruption or because we have not exactly duplicated a particular operating environment. In such circumstances, we can only continue to try to fix the problem if we can either access the system remotely or by some other to duplicate the system.

Overtime Calculation by Earnings Code Features

This DSD Extended Solution calculates the pay rate and hours of a specific overtime earnings code. Earnings codes can be setup to have hours and/or earning amounts included in the overtime calculation. The calculated overtime hours and rate will be updated for specified overtime earnings code.

Section B: Getting Started



- **If you reinstall or upgrade one of the Sage 100 modules listed in the following table, you must also reinstall this Enhancement.**
- Enhancements from different Sage Developers are generally not designed to work together. If installed together, problems are likely to occur.
- **Check with DSD before installing more than one Enhancement.**

Required Levels

Sage 100 Module	Module Required	Required Level
P/R	Y	2.19

Installation

1. **Back-up:** Exit all Sage 100 sessions. Back-up existing Sage 100 data.
2. **Check Levels:** Sage 100 module levels **must match** those listed above.
3. **Run Enhancement Setup Program:** Save the executable installation program (sent to you or downloaded from our website) in a convenient location on the Sage 100 server. Launch the program from Windows Explorer or by selecting Start/Run, and then browse for the file in the location you saved it. Follow on-screen instructions.
4. **Send your Sage Serial Number to your DSD Representative:** Send your Sage Serial Number to your DSD representative in order for us to send you back the encrypted keys to unlock your system. This serial number can be found in Library Master\Setup\System Configuration, Tab 3. Registration as Serial Number.
5. **Re-Start Sage 100:** Sage 100 will be updated.
6. **Unlock the Enhancement:** DSD Enhancements must be unlocked to run. When any part of the Enhancement is run for the first time, the **DSD Enhancement License Agreement and Activation** window will appear. Follow the steps shown on that window. *You can click the Help button for more detailed instructions.*

Note: On the next page is a screenshot of the DSD Enhancement License Agreement and Activation window.

After accepting the License Agreement, you can then select the type of unlocking that you'd prefer. The choices are File, Web, Demo and Manual Entry.

File Unlock: After receiving your encrypted serial number key file from DSD, and placing that file in the MAS90/SOA directory, selecting this option will unlock all products keys contained in the file. This means you can unlock all enhancements at once using this option.

Web Unlock: If the system that is running the DSD Enhancement *has web access* and you *have sent DSD your Sage Serial number*, you can unlock the Enhancement without assistance using Web Unlock. When this option is selected, the program will attempt to download encrypted serial number key file from DSD *and then proceed to unlock all enhancements contained in the file*.

- *The Sage 100 system that is being used must have web access for this option to be effective.*
- *You can send your Sage Serial Number to your DSD Enhancements sales representative.*

Demo Unlock: If a Demo mode is available for the Enhancement you're running, you will be able to Demo unlock the product without assistance from DSD for demo purposes.

- *Creating a Demo Unlock is a good way to temporarily unlock DSD Enhancements off-hours, if you do not have web or email access. Later, you can unlock the product fully, during business hours.*

Manual Entry Unlock: If you want to unlock a single enhancement using a single encrypted key, you can select this option and enter the 64 character key you receive from DSD by copy and paste.

Note: You can also unlock a DSD Enhancement through the [DSD Enhancement Control Panel](#) found on the Library Master Utilities Menu. Then, select the Enhancement with your mouse from the list of Enhancements and click the **Unlock Product** button on the right side of the window.

- Convert Data:** After unlocking, the DSD Conversion Wizard will appear. Follow on-screen instructions to complete data conversion. *You can exit the conversion program without converting data. The Enhancement will not proceed, however, until data is converted. If you enter an enhanced program and data has not been converted, the conversion program will run again.*

DSD Enhancement Control Panel

Starting with version 3.61, all DSD Enhancement products include DSD's Enhancement Control Panel. The **DSD Enhancement Control Panel is accessed from the Library Master Utilities menu.**

The DSD Enhancement Control Panel is a simple to use yet powerful system to help maintain DSD Enhancements installed on a Sage 100 system. To use it, select an Enhancement product from the list on the window and then click the button, on the right side of the window, which corresponds with the desired task.

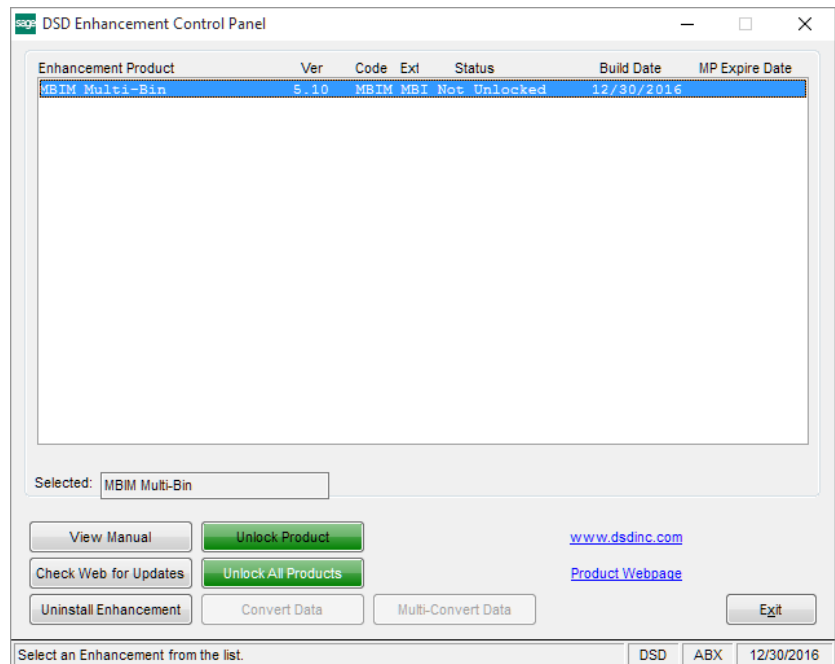
View Manual: This button will display the product manual for the selected Enhancement using Adobe Acrobat. For this to be possible, the PDF file for the corresponding manual must be in the "MAS90/PDF" folder in the Sage 100 system. If the file is not present, and the system has web access, the correct PDF file will be automatically downloaded from the DSD website, put into the "MAS90/PDF" folder and then displayed.

Check the Web for Updates: This button will check the DSD website to see what the current build is the selected Enhancement and alert the user if a later version is available. *This requires an internet connection on the Sage 100 system.*

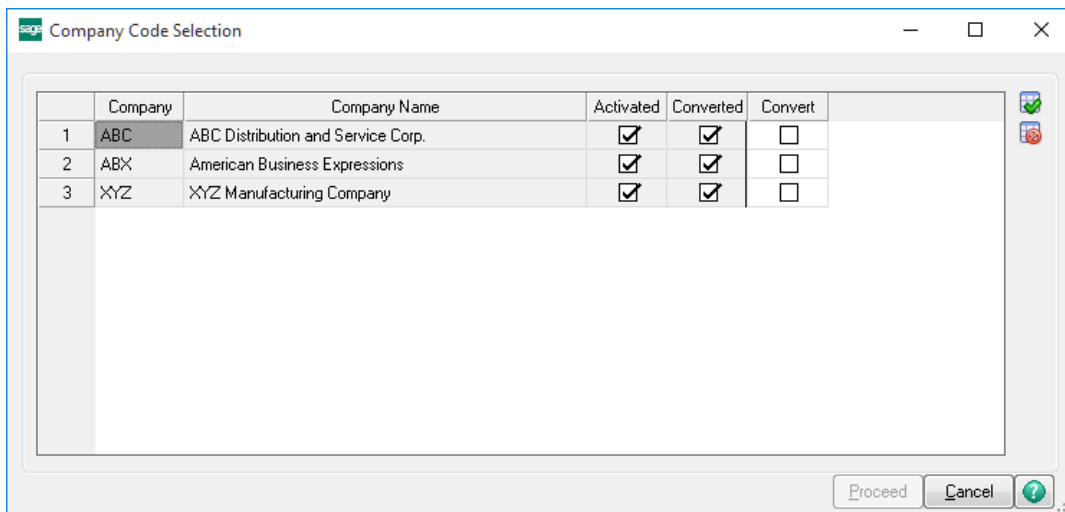
Unlock Product: This will cause the DSD Enhancement License Agreement and Activation window to appear. Using this window is described on the previous page. *This button is disabled if the selected Enhancement is already unlocked or if unlocking is not required.*

Unlock All Products: This will cause the DSD Enhancement All License Agreement and Activation window to appear. This window is similar to the one described on the previous page, but has only web and file as options to unlock. *This button is never disabled.*

Convert Data: After verification, the selected Enhancement's data conversion program will run. Data conversion is non-destructive, and may be triggered any number of times. Sometimes this is required to fix data records imported or updated from a non-enhancement installation.



Multi-Convert Data: Multiple Companies can be converted at the same time for a given Enhancement. (If you have a large number of Companies to convert, please do in batches of 20 or fewer due to memory limitations.)



Help: The Help button, located at the bottom right of the window, opens an HTML help file.

Get Adobe Acrobat: Opens the Adobe Acrobat website to the page where Acrobat can be downloaded and installed.

Uninstall Enhancement If this option is available, then selecting this button will start the un-install process, removing the enhancement from the system. (for more information see [Uninstall DSD Enhancements](#))

Section C: Setup

Upon completion of software installation, you will need to access the DSD Extended Solutions Setup from the Payroll Setup menu. Select this part number and the Setup screen for this Extended Solution will appear. Check the 'Enable DSD Extended' box to activate this Extended Solution.

PR-1134 Setup Options [X]

Overtime Calculation by Earnings Code

Enable DSD Extended Level 2.21

Enhanced Overtime Earnings Code 🔍

Recalculate Deductions after Overtime Calculation

Accept Cancel

DSD ABC 12/23/2020

Answer the following prompts:

ENHANCED OVERTIME EARNINGS CODE: Specify the earnings code. Method of entry must equal overtime.

RECALCULATE DEDUCTIONS AFTER OVERTIME CALCULATION: Check to recalculate deductions after overtime calculation.

You should visit this Setup screen after each upgrade or reinstallation of this Extended Solution.

Role Maintenance

The following Task has been added to Payroll, Setup Options:

- Extended Solutions Setup

Please review your security setup in Role Maintenance and make appropriate changes.

Section D: System Operations

Earnings Code Maintenance

A 'Overtime...' button has been added to the Earnings Code Maintenance screen.

The screenshot shows the 'Earnings Code Maintenance (ABC) 12/11/2019' window. At the top, the 'Earnings Code' is '000001' and the 'Description' is 'Regular'. A search icon and navigation arrows are next to the code. An 'Overtime...' button is visible in the top right corner. Below the description, there are several sections:

- Earnings Type:** Regular (dropdown)
- Method of Entry:** Standard (dropdown)
- Employee Pay Rate:** Pay Rate 1 (dropdown)
- Fixed Amount:** .000
- Pay Rate Multiplier:** 1.000
- Subject to Workers' Comp.:**
- Apply to Box 14 on W-2:**
- Exclude from ALE Report:**

On the right side, there are two sections:

- Time Off Types to Accrue:**
 - All Time Off:
 - Vacation: Sick: Personal:
- Post Expense by Dept.:** Expense Account: [Searchable field]

At the bottom, there is a 'Tax Rule' field with '-800039' and 'Regular Wages' next to it. A search icon and a printer icon are also present. At the bottom right, there are buttons for 'Accept', 'Cancel', and 'Delete', along with a printer icon and a help icon.

Click the 'Overtime...' button to bring up the Alternate Overtime Calculation window.

The screenshot shows the 'PR-1134 Alternate Overtime Calculation' window. It contains two checkboxes:

- Include Rate:**
- Include Hours:**

At the bottom, there are buttons for 'Accept' and 'Cancel'.

INCLUDE RATE: Check this box to include this Earnings Code's Amount in the Enhanced Overtime Calculation.

INCLUDE HOURS: Check this box to include this Earnings Code's Hours in the Enhanced Overtime Calculation.

You can select any combination of the Include Rate and Include Hours check boxes. Earnings Codes where the 'Method of Entry' equals Fixed will only have the Rate option available. The Earnings Code for Enhanced Overtime Calculation will function as if both the Include Rate and Include Hours boxes are checked.

Payroll Data Entry

An 'Overtime...' button has also been added to the Payroll Data Entry screen.

Payroll Data Entry (ABC) 12/11/2019

Employee No. 11-0000100
 Name JERRY A. THOMAS
 Entry No. 1 Pay Cycle Weekly Pay Method Hourly

1. Header 2. Lines

Days Worked 5
 Weeks Worked 1
 Print Check Yes

Automatic Deductions
 Manual Taxes
 Direct Deposit

Bank Code
 Check No.
 Check Date
 Check Amount .00

Overtime...

Pay Check Totals					
Hours	Earnings	Voluntary Deduct	Taxes	Direct Deposit	Net Amount
.00	.00	.00	.00	.00	.00

Deductions Taxes... Accept Cancel Delete

Click the 'Overtime ...' button to bring up the Alternate Overtime Calculation window.

PR-1134 Alternate Overtime Calculation

Include Check from OT Rate Calculation

Accept Cancel

EXCLUDE CHECK FROM OT RATE CALCULATION: When this box is checked, no Enhanced Overtime Calculation will be performed for this check entry. If the field is not checked, the following calculations will take place during Payroll Tax Calculation.

- 1) Calculate Total Hours: Sum the Hours of all Earnings Codes where Include Hours in Earnings Code Maintenance is checked. Do not include the Hours of the Enhanced OT Earnings Code.
- 2) Calculate Total Amount: Sum the Amount of all Earnings Codes where Include Rate in Earnings Code Maintenance is checked. Do not include the Amount of the Enhanced OT Earnings Code.
- 3) Check that at least one entry with an Earnings Code where Type of Earnings is 'Regular' and the Enhanced Overtime Earnings Code are included in the check entry. If either Earnings Code is missing, no Enhanced Overtime Calculation will be performed. If both exist proceed to step 4.
- 4) Add the Hours of the Enhanced Overtime Earnings Code entry to the Total Hours from Step 1 to determine the Enhanced Total Hours.
- 5) Multiply the Enhanced OT Hours * the pay rate from the first Earnings Code where the 'Type of Earnings' is Regular. Add this sum to the Total Amount from Step 2 to determine the Enhanced Total Amount.
- 6) Calculate the Enhance Overtime Rate as Enhanced Total Amount / Enhanced Total Hours * Pay Rate Multiplier of the Enhanced Overtime Earning Code.
- 7) Replace the rate in the Enhanced Overtime Earnings Code line with the new rate calculated in Step 6.

Example:

Earnings Code Maintenance:

Earnings Code	Type	Calc Method	OT Calc Hours	OT Calc Rate	Pay Rate Multiplier
01	Reg	Standard	Y	Y	1
02	OT	Standard	Y	Y	1.5
03	OT	Standard	Y	Y	1.5
97	M	Standard	N	Y	1

Earnings Code 02 is defined as the Enhanced Overtime Earnings Code in setup.

Payroll Data Entry before Tax Calculation is performed:

Earnings Code	Hours	Rate	Extension
01	16	10.00	160.00
02	16	15.00	240.00
03	8	15.00	120.00
97	8	12.00	96.00

Example:

- 1) (01) 16 Hrs + (03) 8 Hrs = 24 TOTAL HOURS
- 2) (01) \$160 + (03) \$120 + (97) \$96 = \$376 TOTAL AMOUNT
- 3) Both Earning Code 01 and the Enhanced OT Earnings code exist, proceed
- 4) (02) 16 Hours + 24 TOTAL HOURS = 40 Combined Total Hours
- 5) (02) 16 hours * (01) \$10 = \$160 + \$376 TOTAL AMOUNT = \$536 Combined Total Amount.
- 6) \$536 Combined Total Amount / 40 Combined Total Hours * 1.5 pay rate multiplier = \$20.10 Enhanced OT Rate
- 7) Default \$20.10 Enhanced OT Rate into the Rate field of the Enhanced Earnings Code line.

Payroll Data Entry after Tax Calculation is performed:

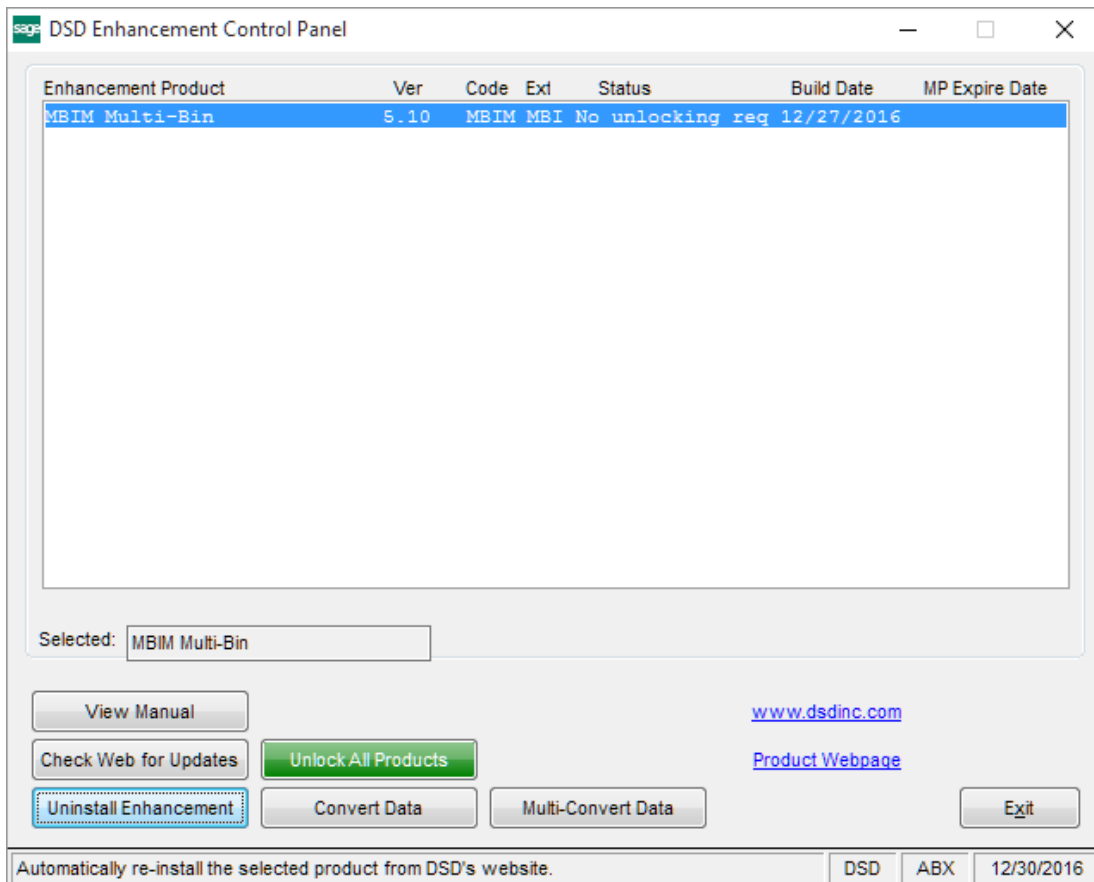
Earnings Code	Hours	Rate	Extension
01	16	10.00	160.00
02	16	20.10	321.60
03	8	15.00	120.00
97	8	12.00	96.00

The calculation of overtime is done prior to the payroll tax calculation so taxes are calculated on actual check amounts. If 'Manual Tax' is checked on the Payroll Data Entry Header tab and the 'Exclude Check from OT Rate Calculation' box is not checked, then manual taxes may need to be manually changed.

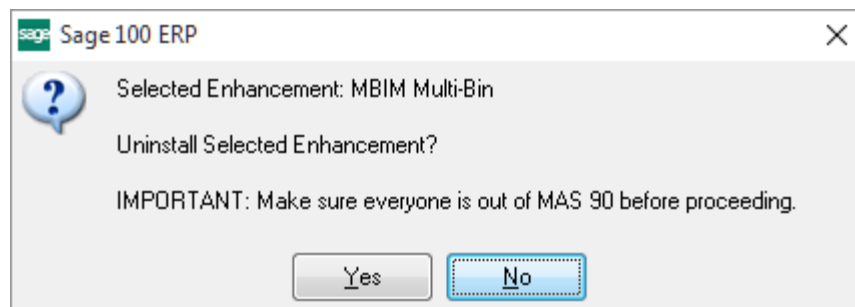
The amounts for deductions calculated using the Percentage of Gross will not be recalculated during Payroll Tax Calculation.

Section E: Uninstall DSD Enhancements

A DSD Enhancements Uninstall Utility has been provided for the purposes of removing DSD Enhancements from your Sage 100 System. This utility may be accessed from the **DSD Enhancement Control Panel** menu option on the **Library Master / Utilities** menu.

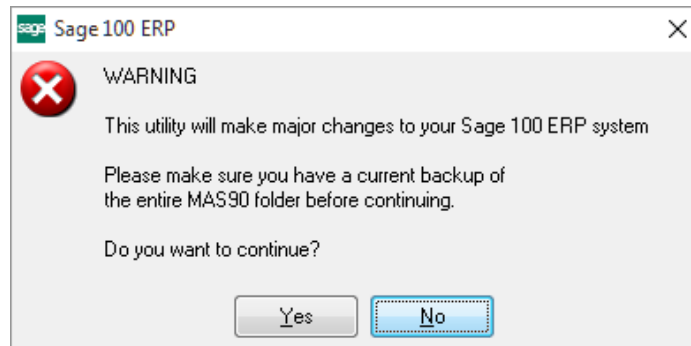


When accessing the **DSD Enhancement Control**, select the enhancement that you wish to Uninstall, and then select the **Uninstall Enhancement** button. The following message box will appear:



Select **No** to exit the Uninstall Process.
 Select **Yes** to continue with the Uninstall Process.

The following message box will appear, to remind you that a complete backup of your entire Sage 100 system should be completed prior to uninstalling a DSD product.



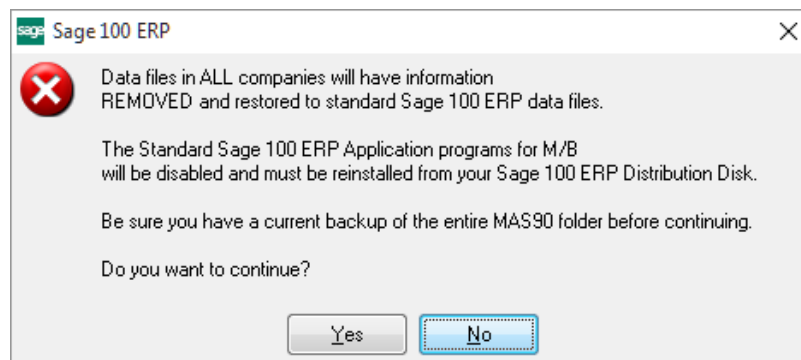
Select **No** to exit the Uninstall Process.
Select **Yes** to continue with the Uninstall Process.

After the Uninstall of the DSD Enhancement, you MUST reinstall certain standard Sage 100 modules, followed by reinstallation of Product Updates and Hot Fixes, if applicable.

A message box will appear, and will display which of those specific Sage 100 modules you must reinstall afterwards.

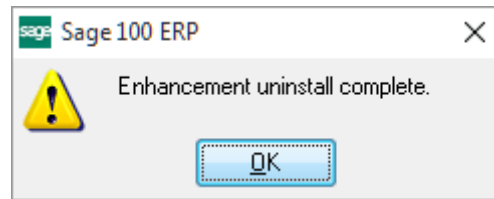
Select **No** to exit the Uninstall Process.
Select **Yes** to continue with the Uninstall Process.

The following message box will appear, displaying the final warning message.



Select **No** to exit the Uninstall Process.
Select **Yes** to continue with the Uninstall Process. At this point, the DSD Enhancement will be removed from the Sage 100 system.

After completion of the Uninstall, the following message box will appear. Select OK to continue.



Now that the Uninstall process is completed, you must:

- Reinstall the applicable standard Sage 100 modules
- Reinstall the latest Sage 100 Service Pack/Updates, if applicable.
- Reinstall any other DSD Enhancements or Developer products that are affected from the reinstallation of the standard Sage 100 module(s).