



DSD Business Systems

Sage 100 Enhancements

S032

Multiple Customer Deposits on a Sales Order

SO-1032

Version 7.30



Information in this document is subject to change without notice.

Copyright 1993-2024, DSD Business Systems All rights reserved.

Multiple Customer Deposits on a Sales Order User's Manual
Version 7.30

2 May, 2024

DSD Business Systems
8787 Complex Drive
Suite 400
San Diego, CA 92123
858/550-5900 8:00am to 5:00pm PST
858/550-4900 Fax

Trademarks

ProvideX® is a Trademark of Sage Software.

Windows is a trademark of Microsoft Corporation.

Sage 100® is a registered trademark of Sage Software.

PXPlus® is a registered trademark of PVX Plus technologies

All other product names and brand names are service marks, and/or trademarks or registered trademarks of their respective companies.

This documentation and the software described herein, is prepared and published under license. Sage Software has not tested or verified either the software or any representation in this documentation regarding the software. Sage Software does not make any warranty with respect to either this documentation or the software described herein, and specifically disclaims any warranty, express or implied, with respect hereto, including the warranties of fitness for a particular purpose and merchantability.

Table of Contents

SECTION A: INTRODUCTION	4
WEB RESOURCES	4
SUPPORT	4
MULTIPLE CUSTOMER DEPOSITS ON A SALES ORDER FEATURES	5
SECTION B: GETTING STARTED	6
REQUIRED LEVELS.....	6
INSTALLATION	6
DSD ENHANCEMENT CONTROL PANEL.....	8
SECTION C: SETUP	10
SO-1032 SETUP	10
ROLE MAINTENANCE	13
SECTION D: SYSTEM OPERATIONS	14
PAYMENT TYPE MAINTENANCE.....	14
TERMS CODE MAINTENANCE	14
CASH RECEIPTS ENTRY	15
A/R CASH RECEIPTS UPDATE	17
SALES ORDER ENTRY	17
SALES ORDER PRINTING	19
INVOICE DATA ENTRY	20
SALES ORDER INVOICE PRINTING	21
SALES JOURNAL PRINTING AND UPDATE.....	21
SALES ORDER QUOTE HISTORY INQUIRY	22
INVOICE HISTORY INQUIRY.....	23
A/R INVOICE HISTORY	23
ODBC DICTIONARY	24
UPGRADE FROM A PRIOR VERSION OF SO-1032.....	25
SECTION E: UNINSTALL DSD ENHANCEMENTS	26

Section A: Introduction

This manual contains a description and instructions for this DSD product. Operating instructions are included for the features added by this product to Sage 100. For instructions on using Sage 100, refer to the appropriate Sage 100 manual, or call your Sage 100 reseller. DSD Business Systems offers excellent Sage 100 support, at an hourly rate.

Web Resources

DSD web site: <http://www.dsdinc.com>

The Enhancement page contains:

- Current Release Schedule*
- Purchasing Information*
- Installation Instructions*
- Product Support*
- Enhancement Links*

S032 Multiple Customer Deposits on a Sales Order:

<http://www.dsdinc.com/enhancement/multiple-customer-deposits-on-a-sales-order-2>

The product web page contains:

- Product Description*
- Web Links*
- Current Product Version Table*
- Product Installation File Download*
- Product Manual in .pdf Format*
- Revision History*
- FAQ*

Support

DSD provides product support through Sage 100 resellers. Support is provided for the current version. Older versions are supported at an hourly rate. DSD's telephone number is **858-550-5900**. Fax: **858-550-4900**.

For a hard error, where the program displays an error dialog, report:

- Error number.*
- Program name.*
- Line number.*
- Program version.*
- Exact sequence that caused the error, including menus and menu selections.*

Other pertinent information.

If leaving a message or faxing, please include:

Your name.

Your phone number (and fax if applicable) and extension.

It is possible to be unable to duplicate a problem, because of data corruption or because we have not exactly duplicated a particular operating environment. In such circumstances, we can only continue to try to fix the problem if we can either access the system with Symantec PCAnywhere or by some other means access or duplicate the system.

Multiple Customer Deposits on a Sales Order Features

This DSD Extended Solution allows for an unlimited number of deposits to be applied to a Sales Order and allows deposits from A/R Cash Receipts to be applied to a customer's Sales Orders. Additionally, terms codes may be associated with payment type to provide defaulting logic.

This Extended Solution is NOT compatible with the Credit Card Processing/PAYA in the Sales Order Module. NOTE: Credit card processing can be done in AR via cash receipts.

Section B: Getting Started

CAUTION

- **If you reinstall or upgrade one of the Sage 100 modules listed in the following table, you must also reinstall this Enhancement.**
- Enhancements from different Sage Developers are generally not designed to work together. If installed together, problems are likely to occur.
- **Check with DSD before installing more than one Enhancement.**

Required Levels

Sage 100 Module	Module Required	Required Level
A/R	Y	7.30
S/O	Y	7.30

Installation

1. **Back-up:** Exit all Sage 100 sessions. Back-up existing Sage 100 data.
2. **Check Levels:** Sage 100 module levels **must match** those listed above.
3. **Run Enhancement Setup Program:** Save the executable installation program (sent to you or downloaded from our website) in a convenient location on the Sage 100 server. Launch the program from Windows Explorer or by selecting Start/Run, and then browse for the file in the location you saved it. Follow on-screen instructions.
4. **Send your Sage Serial Number to your DSD Representative:** Send your Sage Serial Number to your DSD representative in order for us to send you back the encrypted keys to unlock your system. This serial number can be found in Library Master\Setup\System Configuration, Tab 3. Registration as Serial Number.
5. **Re-Start Sage 100:** Sage 100 will be updated.
6. **Unlock the Enhancement:** DSD Enhancements must be unlocked to run. When any part of the Enhancement is run for the first time, the **DSD Enhancement License Agreement and Activation** window will appear. Follow the steps shown on that window. *You can click the Help button for more detailed instructions.*

Note: On the next page is a screenshot of the DSD Enhancement License Agreement and Activation window.

After accepting the License Agreement, you can then select the type of unlocking that you'd prefer. The choices are File, Web, Demo and Manual Entry.

File Unlock: After receiving your encrypted serial number key file from DSD, and placing that file in the MAS90/SOA directory, selecting this option will unlock all products keys contained in the file. This means you can unlock all enhancements at once using this option.

Web Unlock: If the system that is running the DSD Enhancement *has web access* and you *have sent DSD your Sage Serial number*, you can unlock the Enhancement without assistance using Web Unlock. When this option is selected, the program will attempt to download encrypted serial number key file from DSD *and then proceed to unlock all enhancements contained in the file*.

- *The Sage 100 system that is being used must have web access for this option to be effective.*
- *You can send your Sage Serial Number to your DSD Enhancements sales representative.*

Demo Unlock: If a Demo mode is available for the Enhancement you're running, you will be able to Demo unlock the product without assistance from DSD for demo purposes.

- *Creating a Demo Unlock is a good way to temporarily unlock DSD Enhancements off-hours, if you do not have web or email access. Later, you can unlock the product fully, during business hours.*

Manual Entry Unlock: If you want to unlock a single enhancement using a single encrypted key, you can select this option and enter the 64 character key you receive from DSD by copy and paste.

Note: You can also unlock a DSD Enhancement through the **DSD Enhancement Control Panel** found on the **Library Master Utilities Menu**. Then, select the Enhancement with your mouse from the list of Enhancements and click the **Unlock Product** button on the right side of the window.

7. **Convert Data:** After unlocking, the DSD Conversion Wizard will appear. Follow on-screen instructions to complete data conversion. *You can exit the conversion program without converting data. The Enhancement will not proceed, however, until data is converted. If you enter an enhanced program and data has not been converted, the conversion program will run again.*

DSD Enhancement Control Panel

Starting with version 3.61, all DSD Enhancement products include DSD's Enhancement Control Panel. The **DSD Enhancement Control Panel is accessed from the Library Master Utilities menu.**

The DSD Enhancement Control Panel is a simple to use yet powerful system to help maintain DSD Enhancements installed on a Sage 100 system. To use it, select an Enhancement product from the list on the window and then click the button, on the right side of the window, which corresponds with the desired task.

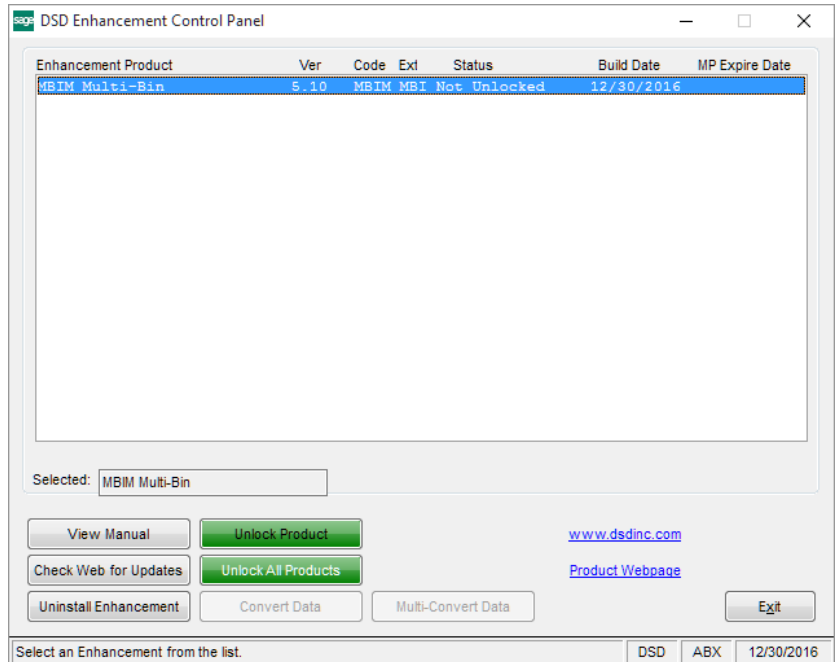
View Manual: This button will display the product manual for the selected Enhancement using Adobe Acrobat. For this to be possible, the PDF file for the corresponding manual must be in the "MAS90/PDF" folder in the Sage 100 system. If the file is not present, and the system has web access, the correct PDF file will be automatically downloaded from the DSD website, put into the "MAS90/PDF" folder and then displayed.

Check the Web for Updates: This button will check the DSD website to see what the current build is the selected Enhancement and alert the user if a later version is available. *This requires an internet connection on the Sage 100 system.*

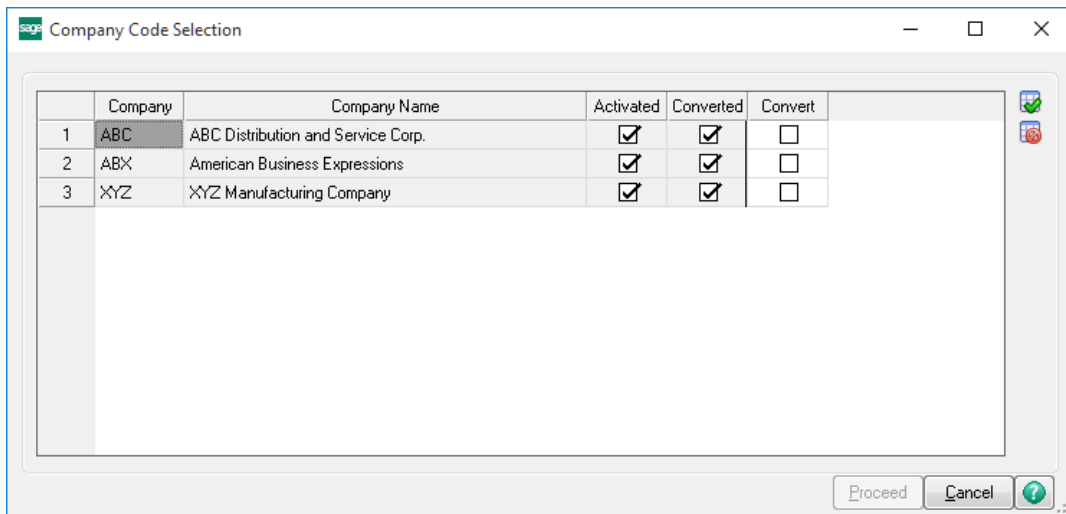
Unlock Product: This will cause the DSD Enhancement License Agreement and Activation window to appear. Using this window is described on the previous page. *This button is disabled if the selected Enhancement is already unlocked or if unlocking is not required.*

Unlock All Products: This will cause the DSD Enhancement All License Agreement and Activation window to appear. This window is similar to the one described on the previous page, but has only web and file as options to unlock. *This button is never disabled.*

Convert Data: After verification, the selected Enhancement's data conversion program will run. Data conversion is non-destructive, and may be triggered any number of times. Sometimes this is required to fix data records imported or updated from a non-enhancement installation.



Multi-Convert Data: Multiple Companies can be converted at the same time for a given Enhancement. (If you have a large number of Companies to convert, please do in batches of 20 or fewer due to memory limitations.)



Help: The Help button, located at the bottom right of the window, opens an HTML help file.

Get Adobe Acrobat: Opens the Adobe Acrobat website to the page where Acrobat can be downloaded and installed.

Uninstall Enhancement If this option is available, then selecting this button will start the un-install process, removing the enhancement from the system. (for more information see [Uninstall DSD Enhancements](#))

Section C: Setup

SO-1032 Setup

Upon completion of software installation, you will need to access the DSD Extended Solutions Setup from the Sales Order Setup menu. Select this part number and the Setup screen for this Extended Solution will appear. Check the 'Enable DSD Extended Solution' box to activate this Extended Solution. All Sales Invoices should be updated before installing this Extended Solution.

Answer the following prompts:

Allow Multiple Payment Types: Check this box if you want to allow multiple payment types.

Post To A/R History in Detail: Check this box if you wish to post to A/R in detail. This question is accessible only if 'Allow Multiple Payment Types' was answered No.

Allow Field Entry: Check this box if you want to allow access to the Deposits grid in Sales Order.

Allow Not On File Sales Order In A/R: Check this box if you want to allow Sales Orders to be created on the fly from Cash Receipts entry.

Assign New Sales Order No During Cash Receipts: Check this box to assign new S/O Numbers during Cash Receipts Entry. Leave unchecked to have the order number assigned during Cash Receipts update. This option is accessible only if the 'Allow Not-On-File Sales Order in A/R' option is checked.

Default Payment Type: The Payment Type entered here will be the default Payment Type used on line 1 of the Deposits grid in Sales Order Data Entry and Sales Order Invoice Data Entry. This default type can be overridden by the Terms Code Payment Type and Customer Default Payment Type.

Default Balance Type: Enter default Payment Type for Balance. Entering anything other than 'AR' will cause the balance amount to be included in the Deposit Amount. Only Payment Type with payment method 'Cash on Delivery' or 'Other' is allowed.

Line Comment Code: This comment code will be placed on the Sales Order as the first line of the order as it is created. This option is accessible only if the 'Allow Not-On-File Sales Order in A/R' option is checked.

Create Transaction History records for Cash Receipts: Cash receipts will create records in the AR Transaction Payment History File for Line items linked to a Sales Order. The transaction type for the records will be set to "S" and the sales order number will be assigned the invoice number field. The invoice type will be listed as "SO Deposit" There is no drill down functionality for these records.

Starting with version 4.40.PU8, a new Deposit Audit file has been added to SO-1032 in version 4.40.PU8. This option will be available when 'Allow Field Entry' is selected on Setup Options. A process has been added to SO-1032 that creates an audit trail of amounts associated with Deposits entered or modified in Sales Order and SO Invoice, or posted during Sales Journal Update.

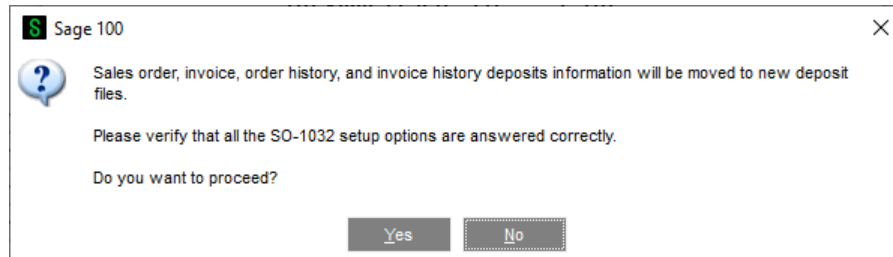
This file will be written to every time a deposit record is created or modified during Sales Order Entry, SO Invoice Entry or posted during Sales Journal Update.

The SO-1032 SO_DepositAudit_001 file will be available via ODBC so reports can be written. No reports are provided as part of this feature. No User Interface is provided into this file.

New Installation conversion (see Upgrade installation section on page 26)

To convert your files to the new file format, click the 'Convert' button on the SO-1032 Setup Options screen. A message box will appear informing you that the Sales order, invoice, order history, and invoice history deposits information will be moved to new deposit files. You will also be asked to verify that all SO-1032 setup options are answered correctly. Click 'Yes' to proceed with the conversion.

Once conversion is completed the 'Convert' button will no longer appear on the Setup screen.



The following takes place during conversion depending how you defined the Setup options:

Deposit records will be created in the new deposit files using the System Date as the Deposit Date and '000001' as the Deposit Number.

If 'Allow Multiple Payment Types' is checked, then Payment Type, Encrypted Credit Card No, Last4UnencryptedCreditCardNos, Expiration Date, Cardholder Name, Check No, Reference No, and Deposit Amount will move to the corresponding fields in the new file.

If 'Allow Multiple Payment Types' is unchecked, then Payment Type and Credit Card data will be moved to the Comment Text field.

If 'Default Balance Type' is not set to 'AR', then the deposit amount on sales orders and invoices will be set to the net order or invoice total. Otherwise, it will not be changed.

Regardless of how 'Allow Multiple Payment Types' is answered, all deposit related fields listed below in sales order header file and invoice header file will be cleared. However, these fields will not be cleared in Sales Order/Quote History and A/R Invoice History.

PaymentType
 CheckNoForDeposit
 OtherPaymentTypeRefNo
 CorporateCustIDPurchOrder
 CardholderName
 ExpirationDateMonth
 ExpirationDateYear
 EncryptedCreditCardNo
 CreditCardCVV2No
 Last4UnencryptedCreditCardNos
CreditCardAuthorizationNo
 CreditCardTransactionID
 AuthorizationDate
 AuthorizationTime
 AuthorizationCodeForDeposit
 CreditCardTransactionIDForDep

PaymentTypeCategory
PayBalanceByCreditCard
AVSAddress
AVSCity
AVSState
AVSZipCode
CreditCardComment
AuthorizationRequiredFlag
CreditCardPreAuthorizationAmt
from.CreditCardPaymentBalanceAmt
CorporateSalesTax
DepositCorporateSalesTax
CorporateTaxOverrd
DepositCorporateTaxOverrd

You should visit this Setup screen after each upgrade or reinstallation of this Extended Solution.

Role Maintenance

The following Task has been added to Sales Order, Setup Options:

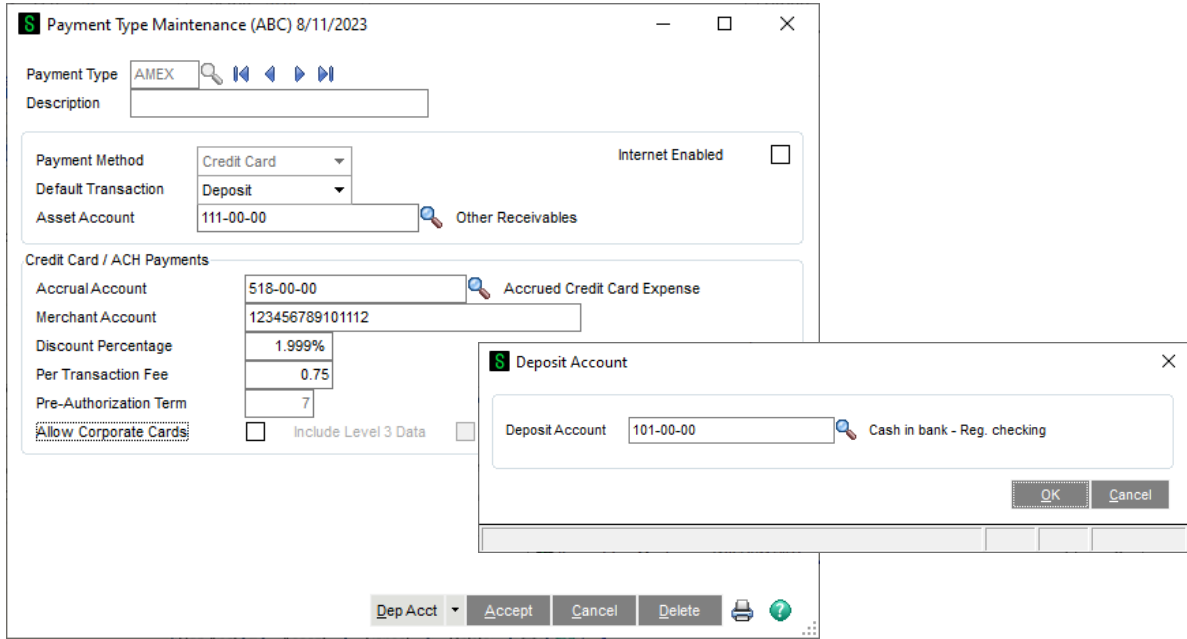
- DSD Extended Solutions Setup

Please review your security setup in Role Maintenance and make appropriate changes.

Section D: System Operations

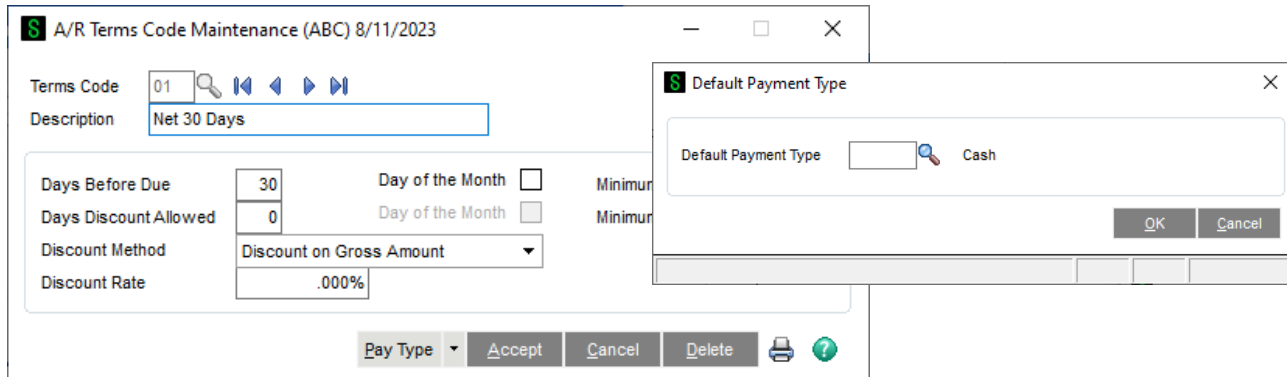
Payment Type Maintenance

If you selected to use multiple payment types, a 'Dep Acct' button will appear in A/R Payment Type maintenance. You can specify a deposit account here or leave it blank to use the MAS90 customer deposit account.



Terms Code Maintenance

If you selected to use multiple payment types during setup then a 'Pay Type' button will be added to A/R Terms Code Maintenance. When clicked a default payment type can be specified for each Terms Code.



Cash Receipts Entry

To enter a Sales Order Deposit, enter the Sales Order Number on the line in Cash Receipts Entry. Do not enter an Invoice Number or General Ledger Account Number. Only Standard orders and Back orders are allowed and a Sales Order that is being invoiced can't be entered.

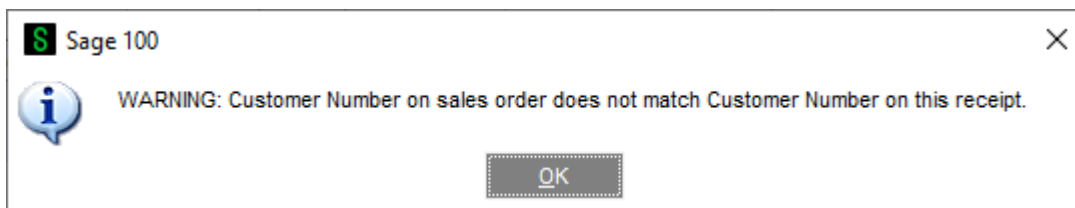
The screenshot shows the 'Cash Receipts Entry' window for ABC on 8/11/2023. The Customer No. is 01-ABF, Name is American Business Futures, and Deposit Type is Cash with Check No. 1201. The window has three tabs: 1. Header, 2. Lines, and 3. Payment. The 'Lines' tab is active, showing a table with one line item. Below the table is a detailed view for the selected line, where the 'Sales Order No.' field is highlighted with a red border. At the bottom right, the Posting Balance is 1,000.00 and Total Posted is .00.

Line	Invoice No.	Inv Date	Inv Amount	Disc Used	Amt Posted	Balance
1			.00	.00	.00	.00

Line Type	Invoice
Discount Date	
GL Account	
G/L Acct Desc	
Sales Order No.	
Payment Type	
Check No.	
Reference No.	

Posting Balance: 1,000.00
Total Posted: .00

If the Customer Number on the Sales Order does not match the Customer Number on the Cash Receipt, you will receive the following warning.



If you checked the 'Allow Not-On-File Sales Order In A/R' option in Setup, you can enter a not-on-file Sales Order No or 'N' for next order number. When 'Assign New Sales Order No During Cash Receipts' is checked and you enter 'N', a new sales order number will be returned. Otherwise, a new order

number will be assigned during Cash Receipts Update. The 'New Sales Order' field is a display-only field.

The Line Type field will change to 'GL Account' and the Account Number field will be set to the Payment Type's deposit account after a Sales Order Number has been entered. The Customer Deposit Account specified in Sales Order Setup will be used if that account is blank.

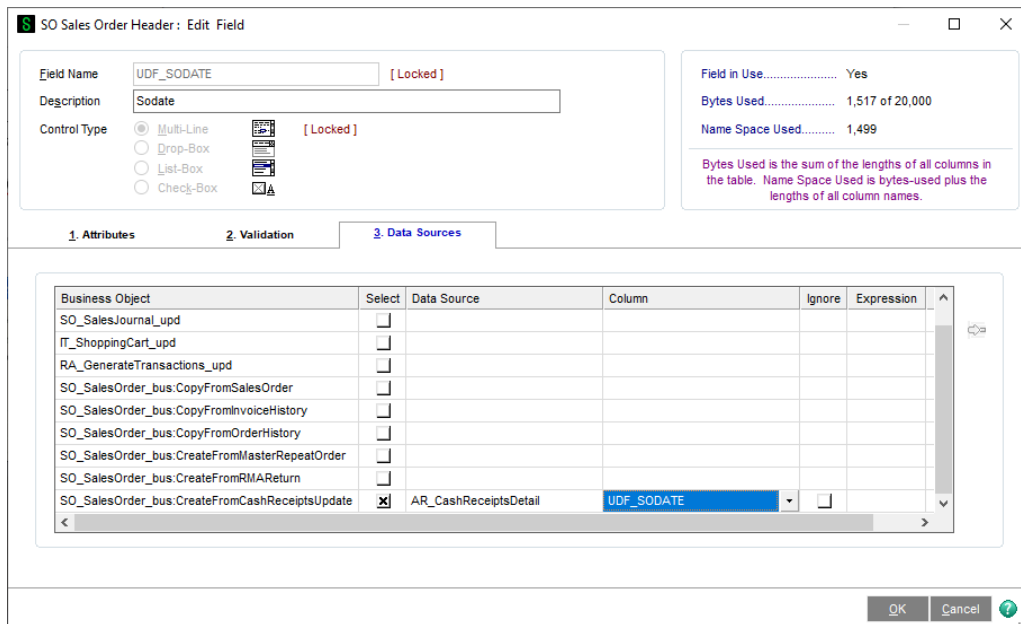
For cash deposits the Payment Type field will default to 'CHECK' and Check No field will default to the Check No on the cash receipt header. You may change the Payment Type to any non-credit-card payment type or you can enter a different check number.

For credit card deposits the Payment Type will default to the credit card's payment type, which cannot be changed. The Check No and Reference No fields will be disabled and the credit card authorization code will be written to the Reference No field during update.

If you wish to enter Sales Order Header UDF data when creating a Sales Order on the fly, then you will need to establish corresponding A/R Cash Receipt Detail UDFs. Custom Office User Defined Field Maintenance for Sales Order Header UDFs has been modified with an additional data source:

SO_SalesOrder_bus:CreateFromCashReceiptsUpdate

Apply this data source to each Sales Order UDF to link it to the correct A/R Cash Receipt Detail UDF.



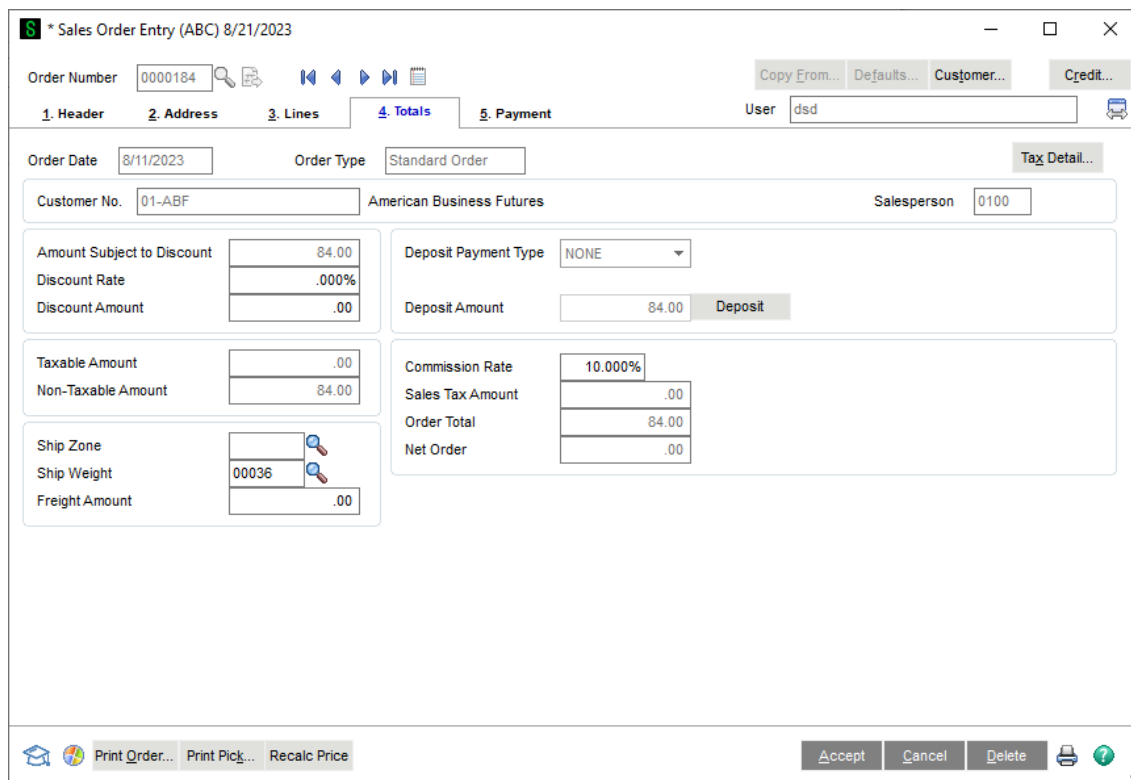
A/R Cash Receipts Update

Cash Receipts Update will create deposit records in Sales Orders. Deposit Date will be set to the Cash Receipt Date and Deposit No will be set to 'CR' + sequence number. If the Sales Order is not-on-file, cash receipts update will create the sales order. If a Line Comment Code is specified in setup, a comment line will be added to the new sales order. If a Sales Order No was assigned during cash receipts entry but it is on-file during Cash Receipts Update, the next sales order number will be used.

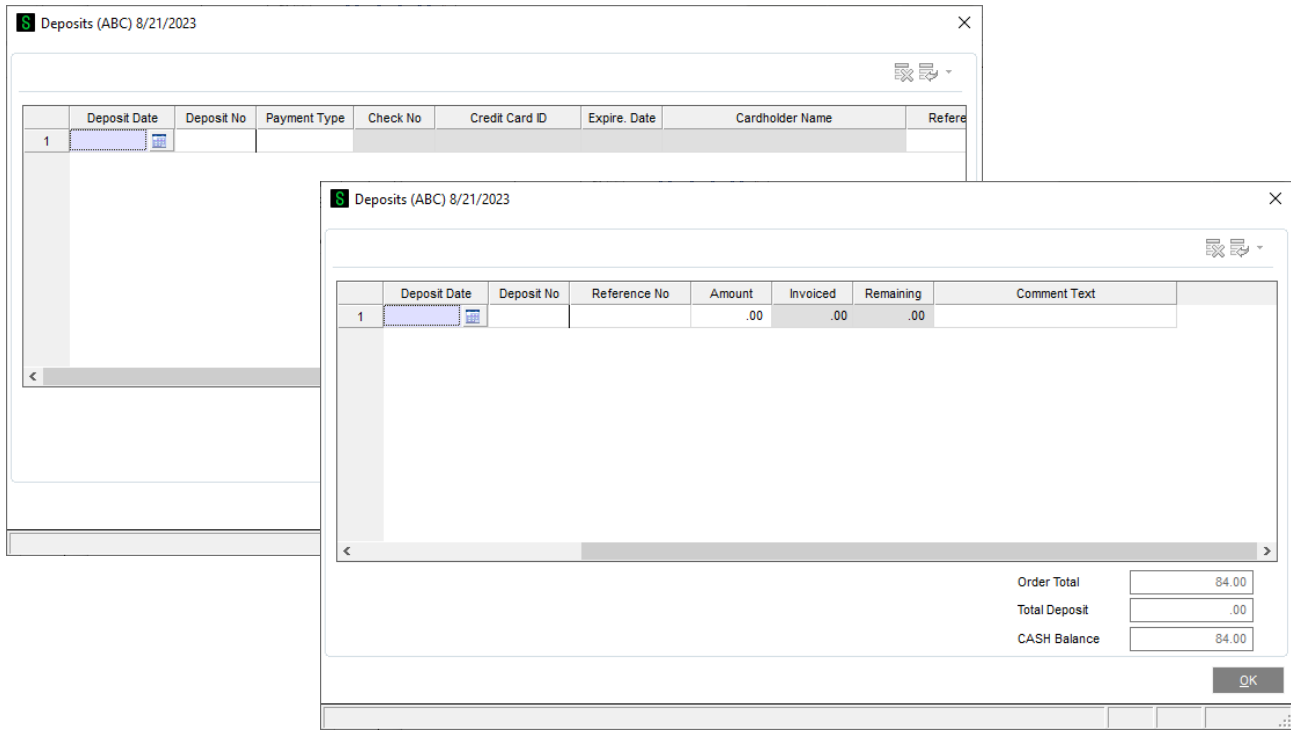
If you elected to 'Allow Not-On-File Sales Order in A/R' and selected 'Create New Sales Order No During Cash Receipts,' a second Cash Receipts transaction cannot be placed on a Sales Order that was created on the fly and currently exists only in the Cash Receipts batch. You need to update the batch so that the order exists in Sales Order Header File and then you can apply another Cash Receipt Deposit to it.

Sales Order Entry

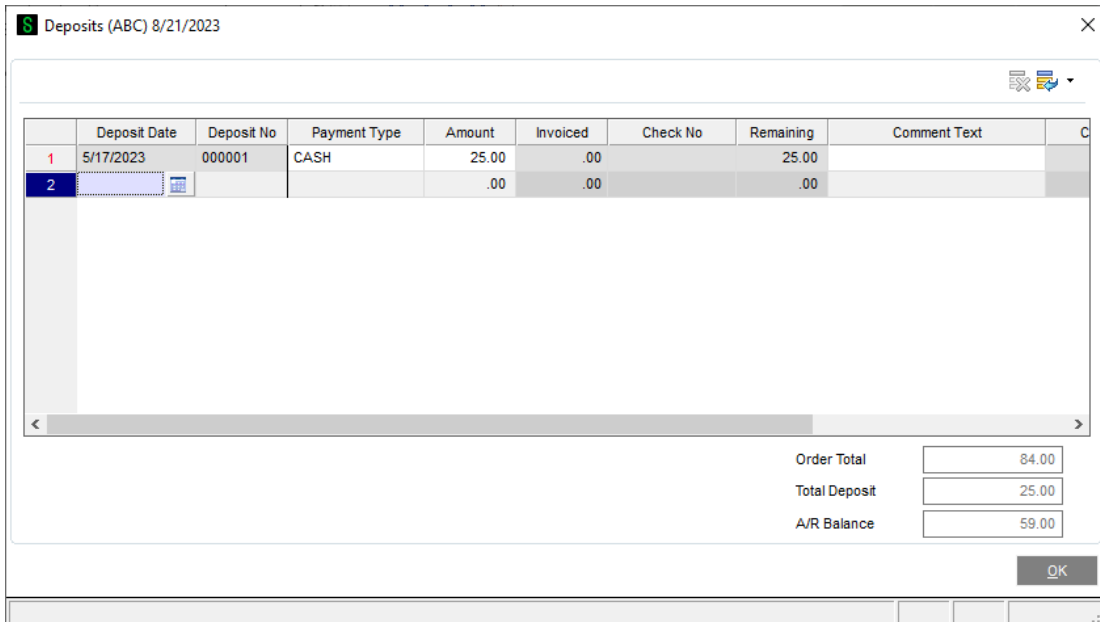
A 'Deposit' button is added to the Totals tab of Sales Order Entry and the standard Payment Type and Deposit Amount fields have been disabled. Click the 'Deposit' button to access the Deposits screen.



If you checked 'Allow Multiple Payment Types' during setup, you will have access to the following fields: Deposit Date, Deposit No, Payment Type, Check No, Credit Card No, Expire Date, Cardholder Name, Deposit Date, Deposit No, Reference No, Amount, and Comment Text.



If you did not check 'Allow Multiple Payment Types' during setup then you will only be allowed to enter the Deposit Date, Deposit No, Reference No, Amount, and comment Text. To add a new Credit Card in the S/O Sales Order Entry Deposit panel, the A/R Setup option 'Allow Entry of Expanded Customer Numbers' must be checked.



When you first access the deposit screen for a new sales order, a default deposit record will be added if a default payment type is found. Default Payment type may come from the customer, terms code, or SO-1032 Setup.

Unlimited deposits can be entered and deposits are applied in Deposit Date/Deposit No order. The Deposit Date and Deposit No cannot be changed once a deposit has been entered and there is no ability to re-arrange the order of the deposits.

Sales Order Printing

Deposit records are written to the work file as Item Type 'D' and one record will be written for each deposit. To modify the report to show Deposit records, you must change the line suppression formula of the Group Header 3 a section from:

formula = {SO_SalesOrderWrk.ItemType} = "4" or {@AllowExpandedItemCodes} = "Y"

to:

formula = {SO_SalesOrderWrk.ItemType} = "4" or {@AllowExpandedItemCodes} = "Y" OR
{SO_SalesOrderWrk.ItemType} = "D"

To print deposit details, a new detail section will need to be added and the following suppression formula used in the new section. It is recommended that you put the new Group Header Section between the existing Group Header 3a and Group Header 3b sections. Deposit records will print after all line item details.

formula = {SO_SalesOrderWrk.ItemType}<>"D"

Fields applicable to deposits are:

DepositDate_001

DepositNo_001

PaymentType

CardholderName_001

OtherPaymentTypeRefNo – will contain Reference No regardless of Payment Type.

CommentText

CheckNoForDeposit

Last4UnencryptedCreditCardNos

CreditCardExpirationDate_001

DepositAmt_001

The standard DepositAmount field will contain the total deposit amount.

If 'Default Balance Type' is not 'AR' and there is a non-zero balance, an extra deposit record will be written to the work file. DepositNo_001 will be 'BAL'.

Invoice Data Entry

A 'Deposit' button is added to the Totals tab of Sales Order Invoice Entry and the standard Payment Type and Deposit Amount fields have been disabled. Click the 'Deposit' button to access the Deposits screen.

Deposit Date	Deposit No	Payment Type	Available	Applied	Check No	Remaining	Comment Text
5/17/2023	000001	CASH	25.00	25.00		.00	
			.00	.00		.00	

Invoice Total: 84.00
 Total Deposit: 25.00
 A/R Balance: 59.00

The 'Available' column shows how much is available from the Sales Order, the 'Applied' column shows how much will be applied to the Invoice and the 'Remaining' Column shows how much remains on the Sales Order after 'Applied'. For a one step Invoice, the 'Available' and 'Remaining' columns will be 0.

To add a new Credit Card in the S/O Invoice Entry Deposit panel, the A/R Setup option 'Allow Entry of Expanded Customer Numbers' must be checked.

When a credit memo is applied to an invoice, all deposit records from that invoice will be copied from Invoice History to the credit memo.

Sales Order Invoice Printing

Invoice printing is the same as sales order printing, except that the suppression formula in Details a is different. You must change it from:

formula = {SO_InvoiceWrk.ItemType} in array ("", "4") or {@AllowExpandedItemCodes} = "Y" or _PreviousValue({@InvoiceNoLineNo}) = {@InvoiceNoLineNo}

to:

formula = {SO_InvoiceWrk.ItemType} in array ("", "4", "D") or {@AllowExpandedItemCodes} = "Y" or _PreviousValue({@InvoiceNoLineNo}) = {@InvoiceNoLineNo}

You can use the same invoice form in A/R Invoice History Printing.

See Sales Order Printing section for other details. Be sure to apply the new section between "Details a" and "Details b". Make the Suppress formula read {SO_InvoiceWrk.ItemType}<>"D".

Sales Journal Printing and Update

The Daily Deposit Recap has been modified to print all the deposit details.

ABC Distribution and Service Corp. (ABC)									
Invoice Number	Customer Number	Salesperson	Deposit Date	Deposit No	Credit Card/Check No	Reference No	Expiration Date	Deposit Applied	
Payment Type: AMEX		American Express							
0100059-IN	01 - ABF	0100	7/12/2010	CR0001	*****6780	1564788	06/2012	1,000.00	
								Payment Type: AMEX Total:	1,000.00
Payment Type: CHECK		CHECK							
0100059-IN	01 - ABF	0100	6/30/2010	CR0001	95654			1,000.00	
0100057-IN	02 - JELCO	0300	6/30/2010	CR0001	8563			1,000.00	
0100059-IN	01 - SHEPARD	0200	7/12/2010	CR0001	65478			1,000.00	
								Payment Type: CHECK Total:	3,000.00
Payment Type: MSTER		Mastercard							
0100057-IN	02 - JELCO	0300	7/12/2010	CR0001	*****4140	456489	07/2012	2,000.00	
								Payment Type: MSTER Total:	2,000.00
								Report Total:	6,000.00

Deposits will write to the A/R Deposit History File based on A/R Setup Option 'Retain Deposit Transaction History'.

If SO-1032 setup option 'Post to A/R History in Detail' is checked, deposits will write to the A/R Transaction Payment History file.

If A/R Invoice History 'Retain in Detail' is 'Yes' or 'Summary', all deposits will write to SO-1032's history file (AR_InvoiceHistoryDeposit_001).

If Sales Order module option 'Post Deposits in Detail' is checked, deposits will post to G/L in details. Deposits will post to the payment type deposit account. If no account is specified for the payment type, the Customer Deposit Account specified in Sales Order setup will be used.

Sales Order Quote History Inquiry

A 'Deposit' button is added to the Totals tab of Sales Order Quote History Inquiry. Click the 'Deposit' button to view the Deposits. Changes can not be made from this screen.

If an order was partially invoiced and a back order was created, the deposit information displayed will be the deposits for the back order.

	Deposit Date	Deposit No	Payment Type	Amount	Check No	Comment Text	Credit Card ID	Refer
1	5/1/2025	CR0001	AMEX	250.00				112

Order Total: 1,590.30
Total Deposit: 250.00

If the 'Default Balance Type' is not 'AR' and there is a balance on the sales order, then an extra deposit will be written to Sales Order/Quote history showing the balance as a deposit. The Deposit Number for this record is 'BAL'.

	Deposit Date	Deposit No	Payment Type	Check No	Credit Card ID	Expire. Date	Cardholder Name	Reference No	Amount	
1	8/21/2023	BAL	CASH						1,053.20	Balance
2	8/21/2023	CR0001	CHECK	68521					700.00	

Order Total: 1,753.20
Total Deposit: 1,753.20

Invoice History Inquiry

A 'Deposit' button is added to the Main tab of Invoice History Inquiry. Click the 'Deposit' button to preview the Deposits. Changes can not be made from this screen. If 'Default Balance Type' is not 'AR', there will be an extra deposit record showing the balance.

A/R Invoice History Inquiry (ABC) 8/21/2023

Invoice No. 0100056 Type INV Date 8/21/2023 Source S/O Order No. []

Customer No. 01-ABF Name American Business Futures Ship To 2 American Business Futures Source Journal SO-000010

Customer PO [] Terms Code 01 Net 30 Days Salesperson 01-0100 Jim Kentley

Taxable	2,753.21
Nontaxable	.00
Freight	.00
Sales Tax	165.19
Discount	.00
Invoice Total	2,918.40
Deposit	2,000.00
Net Invoice	918.40

Balance 918.40

Deposits (ABC) 8/21/2023

Deposit Date	Deposit No	Payment Type	Check No	Credit Card ID	Expire. Date	Cardholder Name	Reference No	Amount
7/22/2023	CR0001	CHECK	95654					1,000.00
8/22/2023	CR0001	CASH					1564788	1,000.00

Invoice Total 2,000.00
Total Deposit 2,000.00

A/R Invoice History

If you specified in Setup to 'Post to A/R History in Detail', then during Sales Order Sales Journal Update, one payment record per deposit will be created in the A/R Transaction/Payment History File.

ODBC Dictionary

The files listed below have been added or changed in the ODBC Dictionaries by this Extended Solution for Crystal Reports purposes.

<i>File:</i>	<i>Fields:</i>
SO_InvoiceDeposit_001	All Fields
SO_OrderDeposit_001	All Fields
SO_OrderHistoryDeposit_001	All Fields
SO_DepositRecap_001_Wrk	All Fields
SO_DepositAudit_001	All Fields
SO_InvoiceWrk	DepositDate_001 DepositNo_001 CreditCardExpirationDate_001 CardholderName_001 DepositAmt_001
SO_SalesOrderWrk	DepositDate_001 DepositNo_001 CreditCardExpirationDate_001 CardholderName_001 DepositAmt_001
AR_InvoiceHistoryDeposit_001	All Fields
AR_PaymentType	DepositAcctKey_001
AR_PaymentTypeWrk	DepositAcctKey_001 DepositAccount_001
AR_TermsCode	PaymentType_001
AR_CashReceiptsDetail	SalesOrderNo_001\$ PaymentType_001\$ CheckNo_001\$ ReferenceNo_001\$ NewSalesOrder_001\$
AR_CashReceiptsHistory	SalesOrderNo_001\$ PaymentType_001\$ CheckNo_001\$, ReferenceNo_001\$ NewSalesOrder_001\$
AR_CashReceiptsJournalWrk	SalesOrderNo_001\$ CheckNo_001\$ ReferenceNo_001\$ NewSalesOrder_001\$

Be aware that the ODBC Dictionaries may contain other files and data fields that will be unavailable without their corresponding Extended Solutions installed.

Upgrade from a prior version of SO-1032

If you Setup SO-1032 to use multiple Payment Types, then after running Standard MAS90 data conversion in company maintenance, you must set up all payment types in A/R payment type maintenance before accessing the SO-1032 setup screen. When you go to the Setup screen, you will find SO-1032 disabled.

When you check the 'Enable Extended Solution' check box, the 'Convert' button will appear and all setup options will remain disabled. Click the 'Convert' button to access the payment type mapping dialog . Select a standard MAS90 payment type for each old SO-1032 payment type and click 'Proceed'. After running this conversion, all the setup options and the 'Accept' button will be enabled. You cannot enable SO-1032 without running the conversion.

If SO-1032 was not set up to use multiple Payment Types, there will be no further conversion in setup and the 'Convert' button will not appear.

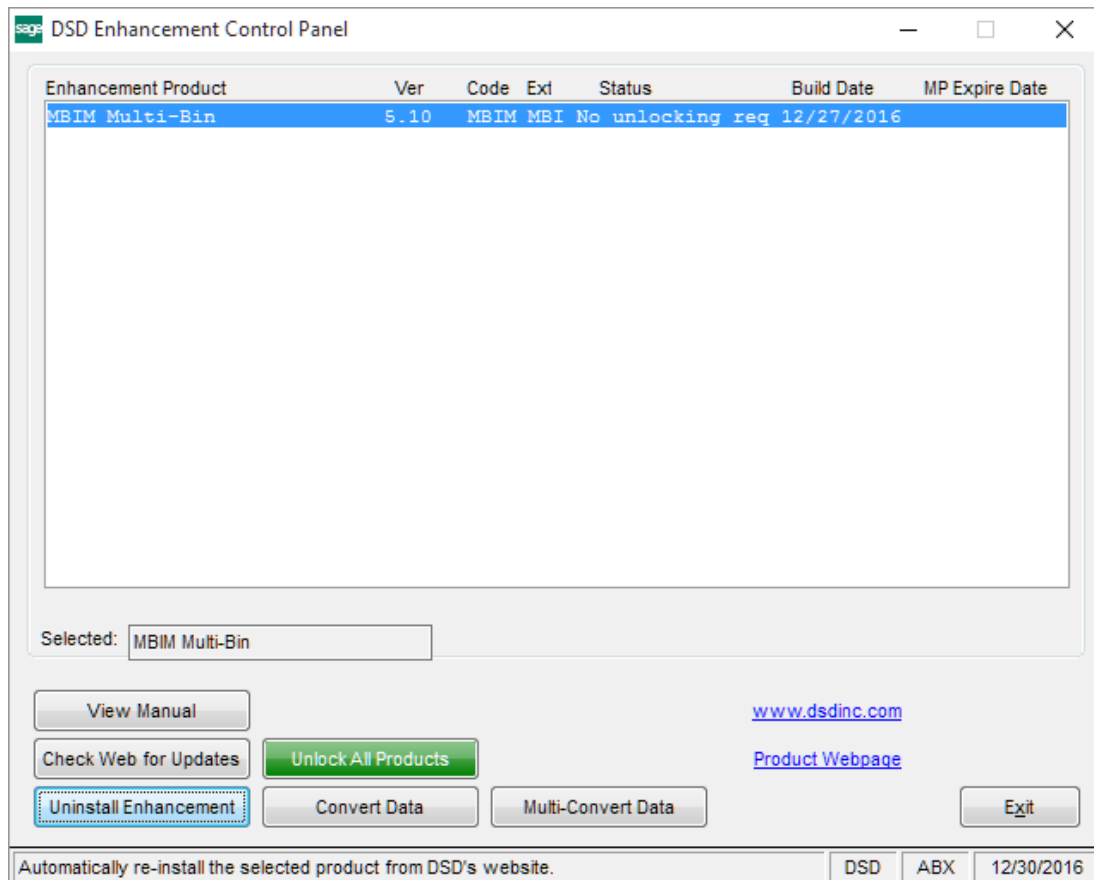
When deposit records are created in the new files, deposit date will be set to the sales order date or invoice date. Deposit number will be sequentially assigned. If the payment type is credit card, the conversion will encrypt the credit card number. If the encryption fails, the original Credit Card No will be stored in the Comment Text file and the Encrypted Credit Card No field will be blank.

Each SO-1032 payment type's account number will be moved to the new Deposit Account field in A/R Payment Type Maintenance.

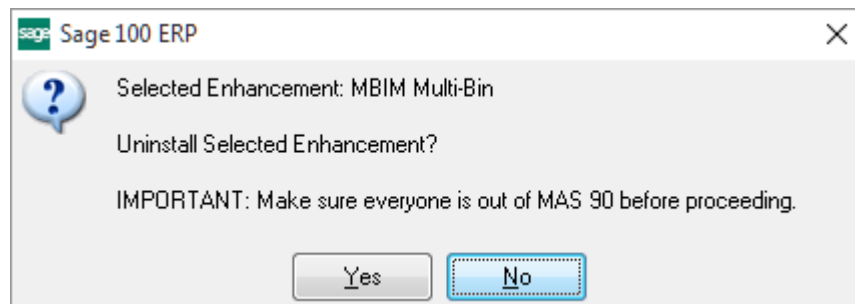
Default Payment Types in Terms Code file will not be converted.

Section E: Uninstall DSD Enhancements

A DSD Enhancements Uninstall Utility has been provided for the purposes of removing DSD Enhancements from your Sage 100 System. This utility may be accessed from the **DSD Enhancement Control Panel** menu option on the **Library Master / Utilities** menu.

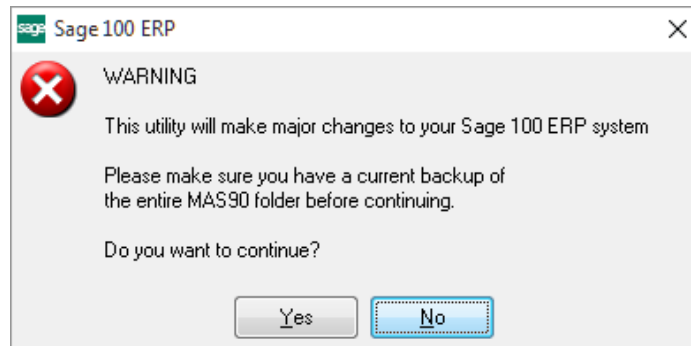


When accessing the **DSD Enhancement Control**, select the enhancement that you wish to Uninstall, and then select the **Uninstall Enhancement** button. The following message box will appear:



Select **No** to exit the Uninstall Process.
 Select **Yes** to continue with the Uninstall Process.

The following message box will appear, to remind you that a complete backup of your entire Sage 100 system should be completed prior to uninstalling a DSD product.



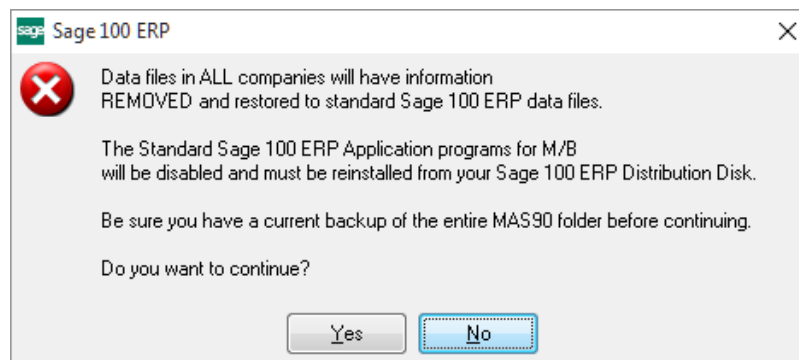
Select **No** to exit the Uninstall Process.
Select **Yes** to continue with the Uninstall Process.

After the Uninstall of the DSD Enhancement, you MUST reinstall certain standard Sage 100 modules, followed by reinstallation of Product Updates and Hot Fixes, if applicable.

A message box will appear, and will display which of those specific Sage 100 modules you must reinstall afterwards.

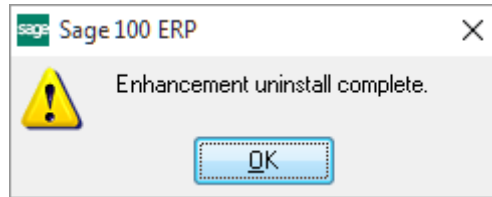
Select **No** to exit the Uninstall Process.
Select **Yes** to continue with the Uninstall Process.

The following message box will appear, displaying the final warning message.



Select **No** to exit the Uninstall Process.
Select **Yes** to continue with the Uninstall Process. At this point, the DSD Enhancement will be removed from the Sage 100 system.

After completion of the Uninstall, the following message box will appear. Select OK to continue.



Now that the Uninstall process is completed, you must:

- Reinstall the applicable standard Sage 100 modules
- Reinstall the latest Sage 100 Service Pack/Updates, if applicable.
- Reinstall any other DSD Enhancements or Developer products that are affected from the reinstallation of the standard Sage 100 module(s).